

The accessories.

Universal Cylindrical Grinding Machine



S20 - The Compact for small precision components.

Contents

	Page
Basic machine	4
Wheel adaptor, nominal dia. 44mm / 1.73"	4
Static balancing	5

Fritz Studer AG
CH-3602 Thun
www.studer.com
info@studer.com

Telefon +41-33-439 11 11
Telefax +41-33-439 11 12
Bank: UBS AG
CH-3001 Bern

Geschäftsführung:
Dr.-Ing. H.-Jürgen Prokop (Vors.)
Dipl.-Ing. Fred W. Gaegauf
Stephan Nell

Studer Schaudt GmbH
D-70329 Stuttgart

Dr. Ing. Ingolf Lammich



External grinding wheels	6
Grinding wheel dia 350mm / 13.78", bore 127mm / 5"	6
Internal grinding unit	8
Internal grinding spindles with belt drive	8
High frequency moter spindles	9
Internal grinding arbors HJND 35	11
Internal grinding arbors HJND 42	12
Internal grinding arbors HJND 50	13
Internal grinding arbors HJND 60	14
Internal grinding arbors HJND 80	15
Face grinding arbor HJNP	16
Chuck HJNZ	16
Collets D8	17
Collets ER11	17
Collets ER12	18
Collets ER16	19
Additional bolts (wheel adaptors) for internal grinding arbors	21
Wheels for internal grinding arbors	22
Weels for chucks	27
Wheels for face grinding arbor	27
Accessories for workhead	28
Adaptors for centres	28
Carrier	28
Collets W20	28
Adaptor for chuck (blank)	32
Three-jaw chuck (manually operated)	32
Face plate	32
Magnetic chuck	33
Centres with adaptor MT2	33
Steady	35
Dressing attachment (non controled)	36
Dressing tools with fitting taper MT1 shortened	36
PCD-dressing plate with sep. fitting taper	38
Grain fliese diamonds with sep. fitting taper	39

Fritz Studer AG
 CH-3602 Thun
 www.studer.com
 info@studer.com

Telefon +41-33-439 11 11
 Telefax +41-33-439 11 12
 Bank: UBS AG
 CH-3001 Bern

Geschäftsführung:
 Dr.-Ing. H.-Jürgen Prokop (Vors.)
 Dipl.-Ing. Fred W. Gaegauf
 Stephan Nell



Studer Schaudt GmbH
 D-70329 Stuttgart

Dr. Ing. Ingolf Lammich

Dressing tools with cylindrical shaft dia 9.52x35mm	40
Machine lighting	42
First cut recognition	42
Marposs	43
Internal measuring arbor Marposs M1 electron BASE	43
Diameter measuring stand	45
Centering measuring arbor	45
Hydraulic and lubricating oil	46
Oil Shell Tonna S32	46
Oil Mobil Velocite 3	46
Oil Mobil DTE 22	47
Oil Mobil DTE 24	47
Oil Motorex Spindle Lube ISO VG 68	48
Grease Mobilux EP 023	48
Filter paper	48
Coolant	49
Machine documentation	49
Dial indicators	49
Auxiliary accessories	50



Basic machine

1908724-Z
Sine stop for table (for centre distance 400mm/15.75")

1908725-Z
Sine stop for table (for centre distance 650mm/25.59")

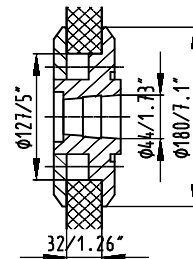
1916600-Z
Table stop



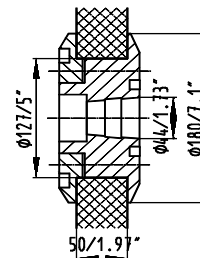
1920702-Z
Table stop with 2 dial indicator holders
Note: Dial gauging radial see chapter "various"

Wheel adaptor, nominal dia. 44mm / 1.73"

2713705-Z
Wheel adaptor dia. 350mm / 13.78", bore 127mm / 5".
Width 15-32mm / .59-1.26" form1, with tapered shaft ends 1:5.715, nominal dia. 44mm / 1.73".
Balancing segments on one side only



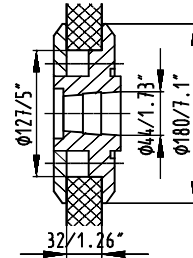
1912710-Z
Wheel adaptor dia. 350mm / 13.78", bore 127mm / 5".
Width 50mm / 1.97" form1, with tapered shaft ends 1:5.715, nominal dia. 44mm / 1.73".
Balancing segments on one side only



1912713-Z

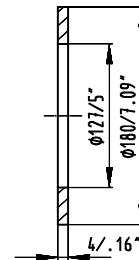
High precision wheel adaptor dia. 350mm / 13.78",
bore 127mm / 5". Width 10-32mm / .39-1.26" form1,
with tapered shaft ends 1:5.715, nominal dia. 44mm
/ 1.73".

Balancing segments on one side only



2713043-Z

Spacer ring 4mm/.16" with bore 127mm/5"

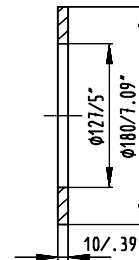


Studer Schaudt GmbH

Dr.-Ing. Ingolf Lammich D-70329 Stuttgart

2012238-Z

Spacer ring 10mm/0.39"



Static balancing

2416600-Z

Balancing equipment dia. up to 400mm / 15.75"
for static balancing of the grinding wheel outside
of the machine.

Note: Requires the respective balancing mandrel for
grinding wheels



1912612-Z

Balancing arbor for grinding wheels
with nominal dia. 44mm / 1.73", length 215mm
/ 8.46" for balancing equipment dia. 400mm
/ 15.75"



External grinding wheels

General application of abrasives

11C Silicon Carbides for:

Cast iron / tungsten carbide / glass / plastics / non-ferrous
metals / ceramics / stainless, acid and heat resistant steel /
hardened steel 63 HRC and higher / nitriding steel.

hardened steel 63 HRC and higher / nitriding steel.

54A White aluminium oxide for:

Non-alloyed, alloyed, unhardened and hardened steel up to
63 HRC (carbon content up to 0.5% / stainless, acid and
heat resistant steel / nitriding steel (untreated) / cast steel
nodular cast iron / tool steel / hard-chrome plated steel.

81A Ceramic aluminium oxide:

Difficult-to-grind steel and alloys (tool steel, high speed
steel) from soft state to 64 HRC / cast steel / cast iron

The following abrasives should no longer be used:

42A, 53A, 57A Pure aluminium oxide was replaced by 54A Pure aluminium oxide

Grinding wheel dia 350mm / 13.78", bore 127mm / 5"

5585236-Z

Grinding wheel dia. 350x25x127mm F1 / 13.78x0.98x5"
form 1, 57A 80 H 8 V. Cutting speed 50m/s /
9840sfpm.

Note: No longer usable for new quotes
until series 171

5585301-Z

Grinding wheel dia. 350x25x127mm F1 / 13.78x0.98x5"
form 1, 11C 320 F 20 VP. Cutting speed 50m/s /
9840sfpm.

Note: No longer usable for new quotes
until series 171

5585237-Z

Grinding wheel dia. 350x25x127mm F1 / 13.78x0.98x5"
form 1, 57A 80 J 7 V. Cutting speed 50m/s /
9840sfpm.

Note: No longer usable for new quotes
until series 171

5585235-Z

Grinding wheel Ø 350x32x127mm F1 / 13.78x1.26x5"
form 1, 53A 46 K 6 V. Cutting speed 50m/s /
9840sfpm.

Note: No longer usable for new quotes,
was replaced by selling no 5585336

1

5585239-Z

Grinding wheel dia. 350x32x127mm F1 / 13.78x1.26x5"
form 1, 53A 180 H 8 V. Cutting speed 50m/s /
9840sfpm.

Note: No longer usable for new quotes,
was replaced by selling no 5585336

1

5585238-Z

Grinding wheel dia. 350x32x127mm F1 / 13.78x1.26x5"
form 1, 53A 80 J 7 V. Cutting speed 50m/s /
9840sfpm.

Note: No longer usable for new quotes,
was replaced by selling no 5585336

1

5585300-Z

Grinding wheel dia. 350x32x127mm F1 / 13.78x1.26x5"
form 1, 11C 120 H 5 V. Cutting speed 50m/s /
9840sfpm

5585336-Z

Grinding wheel dia. 350x32x127mm F1 / 13.78x1.26x5"
forme 1, 54A 120 H 15 VPMF604W.
Cutting speed 50m/s / 9840sfpm

5585337-Z

Grinding wheel dia. 350x32x127mm F1N /
13.78x1.26x5"
forme 1N v=60° x=3, 54A 120 H 15 VPMF604W.
Cutting speed 50m/s / 9840sfpm

5585338-Z

Grinding wheel dia. 350x32x127mm F1N / 13.78x1.26x5"

forme 1N $v=60^\circ$ $x=3$, 54A 80 H 8 V604W.

Cutting speed 50m/s / 9840sfpm

5585339-Z

Grinding wheel dia. 350x32x127mm F1N / 13.78x1.26x5"

forme 1N $v=60^\circ$ $x=3$, 81A 80 H 8 V601W.

Cutting speed 50m/s / 9840sfpm

Internal grinding unit

5600032-Z

Package consisting of adhesive and hardener for mounting of internal grinding wheels on threaded bolts

Internal grinding spindles with belt drive

2026781-Z

Internal grinding spindle for belt drive, type 82060B, dia. 80mm / 3.15" with oil mist lubrication.

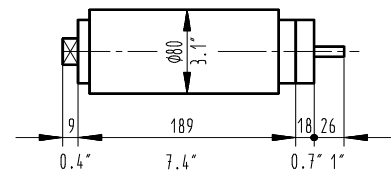
Mains frequency 50Hz (for bore dia. 6-30mm/.24-1.18").

With tool holding fixture HJND 42.

Incl.:5 driving pulleys (9600-57000rpm)

4 medium grinding arbors

40 threaded bolts



2026782-Z

Internal grinding spindle for belt drive, type 82060B, dia. 80mm / 3.15" with oil mist lubrication.

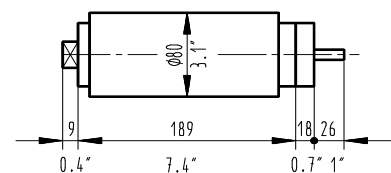
Mains frequency 60Hz (for bore dia. 6-30mm/.24-1.18").

With tool holding fixture HJND 42.

Incl.:4 driving pulleys (11'500-58'800rpm)

4 medium grinding arbors

40 threaded bolts



2026785-Z

Internal grinding spindle for belt drive type 82040B, dia. 80mm / 3.15", with oil mist lubrication.

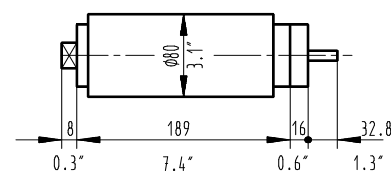
Mains frequency 50Hz (for bores \varnothing 13-45mm / .51-1.77").

With tool holding fixture HJND 35.

Incl.:5 driving pulleys (5'950-39'450 rpm.)

5 arbors of medium length

45 threaded bolts



2026786-Z

Internal grinding spindle for belt drive type 82040B,
dia. 80mm / 3.15", with oil mist lubrication.

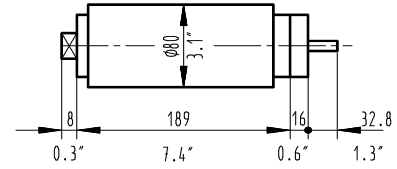
Mains frequency 60Hz (for bores Ø 13-45mm /
.51-1.77").

With tool holding fixture HJND 35.

Incl.: 4 driving pulleys (5'950-39'450 rpm.)

5 arbors of medium length

45 threaded bolts



2026789-Z

Internal grinding spindle for belt drive type 82020B,
dia. 80mm / 3.15", with oil mist lubrication.

Mains frequency 50Hz (for bores dia.

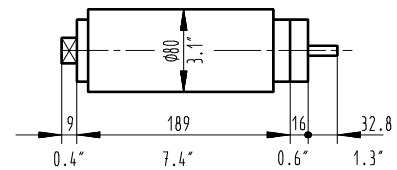
28-80mm/1.1-3.15").

With tool holding fixture HJND 35.

Incl.: 5 driving pulleys (3'950-20'200rpm.)

4 arbors of medium length

30 threaded bolts



2026790-Z

Internal grinding spindle for belt drive type 82020B,
dia. 80mm / 3.15", with oil mist lubrication.

Mains frequency 60Hz (for bores dia.

28-80mm/1.1-3.15").

With tool holding fixture HJND 35.

Incl.: 4 driving pulleys (4'750-20'300rpm.)

4 arbors of medium length

30 threaded bolts

High frequency moter spindles

General notes for HF internal grinding motor spindles:

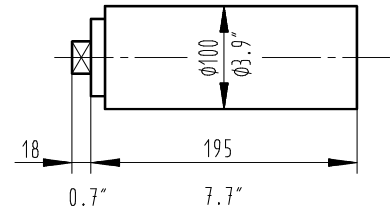
- Incl. testing and initial lubrication, if spindle is ordered together with the machine
- Machine is to be equipped with internal grinding attachment for HF spindles
- Reduction sleeves required depending on the diameter of the internal grinding attachment and the motor spindles

2917624-Z

Internal grinding motor spindle Fischer MFZ 10120 (120'000min-1 / 2kW) dia. 100mm / 3.94" according to Studer specification 1330348A with tool holding fixture for collets type D8.

Oil-air lubrication with 2 lubrication connections and water cooling.

Note: Machine is to be equipped with oil-air lubrication for 2 lubrication connections

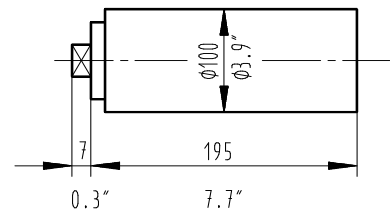


2917611-Z

Internal grinding motor spindle Fischer MFN 10120 (120'000min-1 / 2kW) dia. 100mm / 3.94" according to Studer specification 1330348A with tool holding fixture HJND 80.

Oil-air lubrication with 2 lubrication connections and water cooling.

Note: Machine is to be equipped with oil-air lubrication for 2 lubrication connections

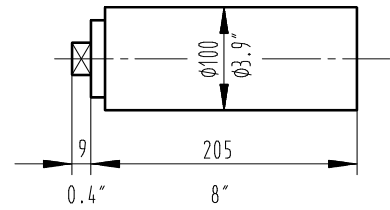


2917610-Z

Internal grinding motor spindle Fischer MFN 1090 (90'000min-1 / 2.5kW) dia. 100mm / 3.94" according to Studer specification 1330348A with tool holding fixture HJND 60.

Oil-air lubrication with 2 lubrication connections and water cooling.

Note: Machine is to be equipped with oil-air lubrication for 2 lubrication connections



2917647-ZK

Internal grinding motor spindle Fischer MFV 1075 (75'000min-1 / 3kW) dia. 100mm / 3.94" according to Studer specification 1330348A with tool holding fixture HJND 50.

Oil-air lubrication with 2 lubrication connections and water cooling.

Note: Machine is to be equipped with oil-air lubrication for 2 lubrication connections

2917648-ZK

Internal grinding motor spindle Fischer MFV 1060
(60'000min-1 / 4kW) dia. 100mm / 3.94" according
to Studer specification 1330348A with tool holding
fixture HJND 42.

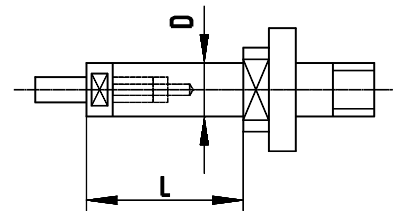
Oil-air lubrication with 2 lubrication connections
and water cooling.

Note: Machine is to be equipped with oil-air
lubrication for 2 lubrication connections

Internal grinding arbors HJND 35

5552387-Z

Grinding arbor HJND 35-716 dia. 7x16mm



5552388-Z

Grinding arbor HJND 35-725 dia. 7x25mm

5552389-Z

Grinding arbor HJND 35-736 dia. 7x36mm

5552301-Z

Grinding arbor HJND 35-918 dia. 9x18mm

5552302-Z

Grinding arbor HJND 35-930 dia. 9x30mm

5552303-Z

Grinding arbor HJND 35-945 dia. 9x45mm

5552304-Z

Grinding arbor HJND 35-1220 dia. 12x20mm

5552305-Z

Grinding arbor HJND 35-1235 dia. 12x35mm

5552306-Z

Grinding arbor HJND 35-1250 dia. 12x50mm

5552307-Z

Grinding arbor HJND 35-1625 dia. 16x25mm

5552308-Z
Grinding arbor HJND 35-1645 dia. 16x45mm

5552309-Z
Grinding arbor HJND 35-1665 dia. 16x65mm

5552310-Z
Grinding arbor HJND 35-2030 dia. 20x30mm

5552311-Z
Grinding arbor HJND 35-2060 dia. 20x60mm

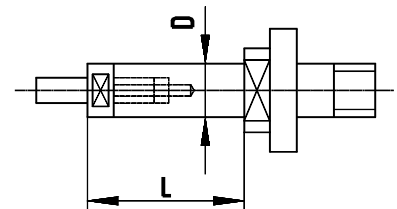
5552312-Z
Grinding arbor HJND 35-2090 dia. 20x90mm

5552390-Z
Grinding arbor HJND 35-2535 dia. 25x35mm

5552391-Z
Grinding arbor HJND 35-2575 dia. 25x75mm

Internal grinding arbors HJND 42

5552384-Z
Grinding arbor HJND 42-514 dia. 5x14mm



5552385-Z
Grinding arbor HJND 42-520 dia. 5x20mm

5552386-Z
Grinding arbor HJND 42-528 dia. 5x28mm

5552289-Z
Grinding arbor HJND 42-716 dia. 7x16mm

5552290-Z
Grinding arbor HJND 42-725 dia. 7x25mm

5552291-Z
Grinding arbor HJND 42-736 dia. 7x36mm

5552292-Z
Grinding arbor HJND 42-918 dia. 9x18mm

5552293-Z
Grinding arbor HJND 42-930 dia. 9x30mm

5552294-Z
Grinding arbor HJND 42-945 dia. 9x45mm

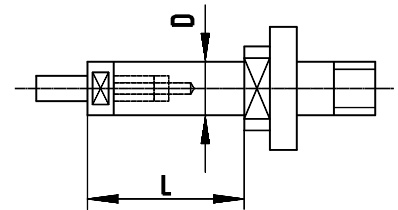
5552295-Z
Grinding arbor HJND 42-1220 dia. 12x20mm

5552296-Z
Grinding arbor HJND 42-1235 dia. 12x35mm

5552297-Z
Grinding arbor HJND 42-1250 dia. 12x50mm

Internal grinding arbors HJND 50

5552277-Z
Grinding arbor HJND 50-514 dia. 5x14mm



5552278-Z
Grinding arbor HJND 50-520 dia. 5x20mm

5552279-Z
Grinding arbor HJND 50-528 dia. 5x28mm

5552280-Z
Grinding arbor HJND 50-716 dia. 7x16mm

5552281-Z
Grinding arbor HJND 50-725 dia. 7x25mm

5552282-Z
Grinding arbor HJND 50-736 dia. 7x36mm

5552283-Z
Grinding arbor HJND 50-918 dia. 9x18mm

5552284-Z
Grinding arbor HJND 50-930 dia. 9x30mm

5552285-Z
Grinding arbor HJND 50-945 dia. 9x45mm

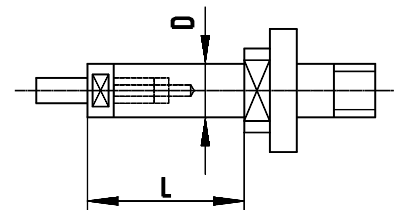
5552286-Z
Grinding arbor HJND 50-1220 dia. 12x20mm

5552287-Z
Grinding arbor HJND 50-1235 dia. 12x35mm

5552288-Z
Grinding arbor HJND 50-1250 dia. 12x50mm

Internal grinding arbors HJND 60

5552265-Z
Grinding arbor HJND 60-412 dia. 4x12mm



5552266-Z
Grinding arbor HJND 60-418 dia. 4x18mm

5552267-Z
Grinding arbor HJND 60-424 dia. 4x24mm

5552268-Z
Grinding arbor HJND 60-514 dia. 5x14mm

5552269-Z
Grinding arbor HJND 60-520 dia. 5x20mm

5552270-Z
Grinding arbor HJND 60-528 dia. 5x28mm

5552271-Z
Grinding arbor HJND 60-716 dia. 7x16mm

5552272-Z
Grinding arbor HJND 60-725 dia. 7x25mm

5552273-Z
Grinding arbor HJND 60-736 dia. 7x36mm

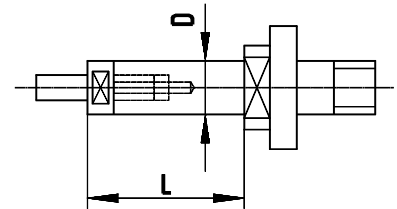
5552274-Z
Grinding arbor HJND 60-918 dia. 9x18mm

5552275-Z
Grinding arbor HJND 60-930 dia. 9x30mm

5552276-Z
Grinding arbor HJND 60-945 dia. 9x45mm

Internal grinding arbors HJND 80

5552253-Z
Grinding arbor HJND 80-308 dia. 3x8mm



5552254-Z
Grinding arbor HJND 80-312 dia. 3x12mm

5552255-Z
Grinding arbor HJND 80-317 dia. 3x17mm

5552256-Z
Grinding arbor HJND 80-3510 dia. 3.5x10mm

5552257-Z
Grinding arbor HJND 80-3515 dia. 3.5x15mm

5552258-Z
Grinding arbor HJND 80-3520 dia. 3.5x20mm

5552259-Z
Grinding arbor HJND 80-412 dia. 4x12mm

5552260-Z
Grinding arbor HJND 80-418 dia. 4x18mm

5552261-Z
Grinding arbor HJND 80-424 dia. 4x24mm

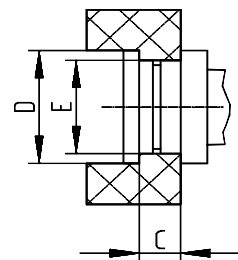
5552262-Z
Grinding arbor HJND 80-514 dia. 5x14mm

5552263-Z
Grinding arbor HJND 80-520 dia. 5x20mm

5552264-Z
Grinding arbor HJND 80-528 dia. 5x28mm

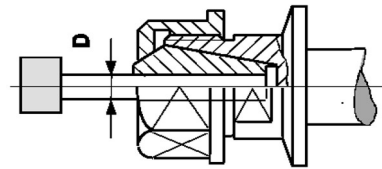
Face grinding arbor HJNP

5552219-Z
Face grinding arbor HJNP 35

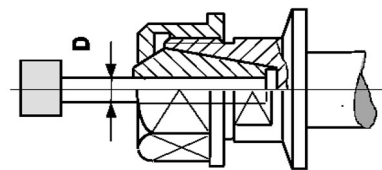


Chuck HJNZ

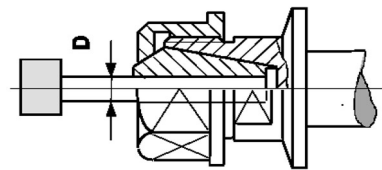
5552210-Z
Chuck HJNZ 35 +2 collets ER16 dia. 3+6mm



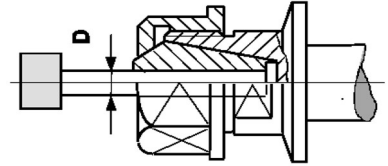
5552209-Z
Chuck HJNZ 42 +2 collets ER12 dia. 3+6mm



5552208-Z
Chuck HJNZ 50 +2 collets ER11 dia. 3+6mm



5552207-Z
Chuck HJNZ 60 +2 collets ER11 dia. 3+6mm



Collets D8

2026501-Z
Collet D8 dia. 1mm

2026502-Z
Collet D8 dia. 1.5mm

2026503-Z
Collet D8 dia. 2mm

2026504-Z
Collet D8 dia. 2.5mm

2026505-Z
collet D8 dia. 3mm

2026506-Z
Collet D8 dia. 3.5mm

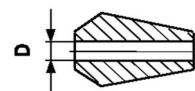
2026507-Z
Collet D8 dia. 4mm

2026508-Z
Collet D8 dia. 4.5mm

2026509-Z
Collet D8 dia. 5mm

Collets ER11

2026510-Z
Collet ER11 dia. 1mm



2026511-Z
Collet ER11 dia. 1.5mm

2026512-Z
Collet ER11 dia. 2mm

2026513-Z
Collet ER11 dia. 2.5mm

2026514-Z
Collet ER11 dia. 3mm

2026515-Z
Collet ER11 dia. 3.5mm

2026516-Z
Collet ER11 dia. 4mm

2026517-Z
Collet ER11 dia. 4.5mm

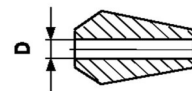
2026518-Z
Collet ER11 dia. 5mm

2026519-Z
Collet ER11 dia. 5.5mm

2026520-Z
Collet ER11 dia. 6mm

Collets ER12

2026521-Z
Collet ER12 dia. 1mm



2026522-Z
Collet ER12 dia. 1.5mm

2026523-Z
Collet ER12 dia. 2mm

2026524-Z
Collet ER12 dia. 2.5mm

2026525-Z
Collet ER12 dia. 3mm

2026526-Z
Collet ER12 dia. 3.5mm

2026527-Z
Collet ER12 dia. 4mm

2026528-Z
Collet ER12 dia. 4.5mm

2026529-Z
Collet ER12 dia. 5mm

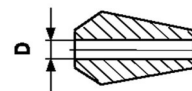
2026530-Z
Collet ER12 dia. 5.5mm

2026531-Z
Collet ER12 dia. 6mm

2026532-Z
Collet ER12 dia. 6.5mm

Collets ER16

2026533-Z
Collet ER16 dia. 1mm



2026534-Z
collet ER 16 dia. 1.5mm 0.06"

2026535-Z
Collet ER16 dia. 2mm

2026536-Z
Collet ER16 dia. 2.5mm 0.10"

2026537-Z
Collet ER16 dia. 3mm

2026538-Z
Collet ER16 dia. 3.5mm

2026539-Z
Collet ER16 dia. 4mm

2026540-Z
Collet ER16 dia. 4.5mm

2026541-Z
Collet ER16 dia. 5mm

2026542-Z
Collet ER16 dia. 5.5mm

2026543-Z
Collet ER16 dia. 6mm

2026544-Z
Collet ER16 dia 6.5mm 0.26"

2026545-Z
Collet ER16 dia. 7mm

2026546-Z
Collet ER16 dia. 7.5mm

2026547-Z
Collet ER16 dia. 8mm

2026548-Z
Collet ER16 dia. 8.5mm

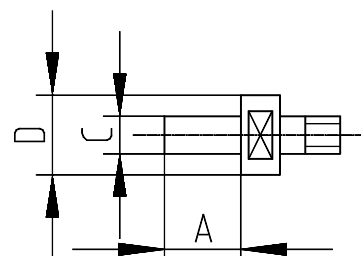
2026549-Z
Collet ER16 dia. 9mm

2026550-Z
Collet ER16 dia. 9.5mm

2026551-Z
Collet ER16 dia. 10mm

Additional bolts (wheel adaptors) for internal grinding arbors

5551918-Z
Set of 10 bolts dia. 3.5mm



5551944-Z
Set of 10 bolts dia. 4mm

5551939-Z
Set of 10 bolts dia. 5mm

5551921-Z
Set of 10 bolts dia. 7mm

5551922-Z
Set of 10 bolts dia. 9mm

5551940-Z
Set of 10 bolts dia. 12mm

5551924-Z
Set of 10 bolts dia. 16mm

5551941-Z
Set of 5 bolts dia. 20mm

5551942-Z
Set of 5 bolts dia. 25mm

Wheels for internal grinding arbors

General application of abrasives

11C Silicon Carbides for:

Cast iron / tungsten carbide / glass / plastics / non-ferrous metals / ceramics / stainless, acid and heat resistant steel / hardened steel 63 HRc and higher / nitriding steel.

54A Pure aluminium oxide for:

Non-alloyed, alloyed, unhardened and hardened steel up to 63 HRc (carbon content up to 0.5% / stainless, acid and heat resistant steel / nitriding steel (untreated) / cast steel nodular cast iron / tool steel / hard-chrome plated steel.

93A Ceramic aluminium oxide (30%) for:

Difficult-to-grind steel and alloys (tool steel, high speed steel) from soft state to 64 HRc / cast steel / cast iron

The following abrasives should no longer be used:

42A Pure aluminium oxide was replaced by 54A Pure aluminium oxide

64A Pure aluminium oxide was replaced by 93A Ceramic aluminium oxide

5583119-Z

Set of 10 wheels dia. 6x6x2.5mm 11C 80 G 6 V

Cutting speed 50m/s / 9840sfpm

5583041-Z

Set of 10 wheels dia. 6x6x2.5mm 54A 80 H 8 V604W

Cutting speed 50m/s / 9840sfpm

5583042-Z

Set of 10 wheels dia. Ø 6x6x2.5mm 93A 120 H 13

VP601

Cutting speed 50m/s / 9840sfpm

5583018-Z

Set of 10 wheels dia. 6x6x2.5mm 42A 80 H 8 V

Cutting speed 50m/s / 9840sfpm.

Note: No longer usable for new quotes,
was replaced by selling no 5583041

1

5583068-Z

Set of 10 wheels dia. 6x6x2.5mm 64A 80 H 8 V

Cutting speed 50m/s / 9840sfpm.

Note: No longer usable for new quotes,
was replaced by selling no 5583042

1

5583009-Z

Set of 10 Ø 8x8x2.5mm 42A 80 H 8 V

Cutting speed 50m/s / 9840sfpm.

Note: No longer usable for new quotes,
was replaced by selling no 5583043

1

5583059-Z

Set of 10 wheels Ø 8x8x2.5mm 64A 80 H 8 V

Cutting speed 50m/s / 9840sfpm.

Note: No longer usable for new quotes,
was replaced by selling no 5583044

1

5583110-Z

Set of 10 wheels dia. 8x8x2.5mm 11C 80 G 6 V

Cutting speed 50m/s / 9840sfpm

5583043-Z

Set of 10 wheels dia. 8x8x2.5mm 54A 80 H 8 V604W

Cutting speed 50m/s / 9840sfpm

5583044-Z

Set of 10 wheels dia. 8x8x2.5mm 93A 120 H 13 VP601

Cutting speed 50m/s / 9840sfpm

5583019-Z

Set of 10 wheels dia. 10x10x4mm 42A 80 H 8 V

Cutting speed 50m/s / 9840sfpm.

Note: No longer usable for new quotes,
was replaced by selling no 5583045

until series 171

5583069-Z

Set of 10 wheels dia. 10x10x4mm 64A 80 H 8 V

Cutting speed 50m/s / 9840sfpm.

Note: No longer usable for new quotes,
was replaced by selling no 5583046

1

5583120-Z

Set of 10 wheels dia. 10x10x4mm 11C 80 G 6 V

Cutting speed 50ms/s / 9840sfpm

5583045-Z

Set of 10 wheels dia. 10x10x4mm 54A 80 H 8 V604W

Cutting speed 50m/s / 9840sfpm

5583046-Z

Set of 10 wheels dia. 10x10x4mm 93A 120 H 13
VP601

Cutting speed 50m/s / 9840sfpm

5583011-Z

Set of 10 wheels dia. 13x13x4mm 42A 60 H 8 V
Cutting speed 50m/s / 9840sfpm.

Note: No longer usable for new quotes,
was replaced by selling no 5583047

1

5583061-Z

Set of 10 wheels dia. 13x13x4mm 64A 60 H 8 V
cutting speed 50m/s / 9840sfpm.

Note: No longer usable for new quotes,
was replaced by selling no 5583048

1

5583112-Z

Set of 10 wheels dia. 13x13x4mm 11C 60 H 15 VP
Cutting speed 50m/s / 9840sfpm

5583047-Z

Set of 10 wheels dia. 13x13x4mm 54A 80 H 8 V604W
Cutting speed 50m/s / 9840sfpm

5583048-Z

Set of 10 wheels dia. 13x13x4mm 93A 120 H 13
VP601

Cutting speed 50m/s / 9840sfpm

5583020-Z

Set of 10 wheels dia. 16x16x6mm 42A 60 H 8 V
Cutting speed 50m/s / 9840sfpm.

Note: No longer usable for new quotes,
was replaced by selling no 5583049

1

5583070-Z

Set of 10 wheels dia. 16x16x6mm 64A 60 H 8 V
Cutting speed 50m/s / 9840sfpm.

Note: No longer usable for new quotes,
was replaced by selling no 5583076

1

5583121-Z

Set of 10 wheels dia. 16x16x6mm 11C 60 H 15 VP
Cutting speed 50m/s

5583049-Z

Set of 10 wheels dia. 16x16x6mm 54A 80 H 8 V604W
Cutting speed 50m/s / 9840sfpm

5583076-Z

Set of 10 wheels dia. 16x16x6mm 93A 120 H 13
VP601
Cutting speed 50m/s / 9840sfpm

5583021-Z

Set of 10 wheels dia. 20x20x6mm 42A 60 H 8 V
cutting speed 50m/s / 9840sfpm.

Note: No longer usable for new quotes,
was replaced by selling no 5583077

1

5583071-Z

Set of 10 wheels dia. 20x20x6mm 64A 60 H 8 V
Cutting speed 50m/s / 9840sfpm.

Note: No longer usable for new quotes,
was replaced by selling no 5583078

1

5583122-Z

Set of 10 wheels Ø 20x20x6mm 11C 60 H 15 VP
Cutting speed 50m/s / 9840sfpm

5583077-Z

Set of 10 wheels dia. 20x20x6mm 54A 80 H 8 V604W
Cutting speed 50m/s / 9840sfpm

5583078-Z

Set of 10 wheels dia. 20x20x6mm 93A 120 H 13
VP601
Cutting speed 50m/s / 9840sfpm

5583022-Z

Set of 10 wheels dia. 25x25x10mm 42A 60 H 8 V
Cutting speed 50m/s / 9840sfpm.

Note: No longer usable for new quotes,
was replaced by selling no 5583079

1

5583072-Z

Set of 10 wheels dia. 25x25x10mm 64A 60 H 8 V
Cutting speed 50m/s / 9840sfpm.

Note: No longer usable for new quotes,
was replaced by selling no 5583080

1

5583123-Z

Set of 10 wheels dia. 25x25x10mm 11C 60 H 15 VP
Cutting speed 50m/s / 9840sfpm

5583079-Z

Set of 10 wheels dia. 25x25x10mm 54A 80 H 8 V604W
Cutting speed 50m/ s / 9840sfpm

5583080-Z

Set of 10 wheels dia. 25x25x10mm 93A 120 H 13
VP601
Cutting speed 50m/s / 9840sfpm

5583023-Z

Set of 5 wheels dia. 32x32x10mm 42A 60 H 8 V
Cutting speed 50m/s / 9840sfpm.

Note: No longer usable for new quotes,
was replaced by selling no 5583081

1

5583073-Z

Set of 5 wheels dia. 32x32x10mm 64A 60 H 8 V
Cutting speed 50m/s / 9840sfpm.

Note: No longer usable for new quotes,
was replaced by selling no 5583082

1

5583124-Z

Set of 5 wheels dia. 32x32x10mm 11C 60 H 15 VP
Cutting speed 50m/s / 9840sfpm

5583081-Z

Set of 5 wheels dia. 32x32x10mm 54A 80 H 8 V604W
Cutting speed 50m/s / 9840sfpm

5583082-Z

Set of 5 wheels Ø 32x32x10mm 93A 120 H 13 VP601
Cutting speed 50m/s / 9840sfpm

5583024-Z

Set of 5 wheels dia. 40x40x13mm 42A 60 H 8 V
Cutting speed 50m/s / 9840sfpm.

Note: No longer usable for new quotes,
was replaced by selling no 5583083

1

5583074-Z

Set of 5 wheels dia. 40x40x13mm 64A 60 H 8 V
Cutting speed 50m/s / 9840sfpm.

Note: No longer usable for new quotes,
was replaced by selling no 5583084

1

5583125-Z

Set of 5 wheels Ø 40x40x13mm 11C 60 H 15 VP
Cutting speed 50m/s / 9840sfpm

5583083-Z

Set of 5 wheels dia. 40x40x13mm 54A 80 H 8 V604W
Cutting speed 50m/s / 9840sfpm

5583084-Z

Set of 5 wheels dia. 40x40x13mm 93A 80 H 13 VP601
Cutting speed 50m/s / 9840sfpm

Weels for chucks

5583601-Z

Set of 10 wheels SARUBIN 60M dia. 6mm/.24"

5583602-Z

Set of 10 wheels SARUBIN 60M dia. 8mm/.31"

5583603-Z

Set of 10 wheels SARUBIN 60M dia. 10mm/.39"

5583604-Z

Set of 10 wheels SARUBIN 60M dia. 12mm/.47"

Wheels for face grinding arbor

5584008-Z

Cup wheel 64A46 H9V dia. 80mm/3.15"

Accessories for workhead

1921705-Z

Guard for chuck for universal workhead with hydrodynamic, fitting taper MT4

1921706-Z

Device for manual length positioning of the center in the workhead with fitting taper MT4

1909603-Z

Manual swiveling probe attachable to the workpiece table for length positioning of the workpiece. With adaption bore \varnothing 8mm / .31" for dial indicator or electronic probe.

Note: Requires radial dial indicator or probe with display unit. (See in chapter Miscellaneous)

Adaptors for centres

2030026-Z

Adaptor for centres MT2 for fitting taper MT4

Carrier

1809617-Z

Set of 5 carriers for dia. 10-50mm / .39-1.97"



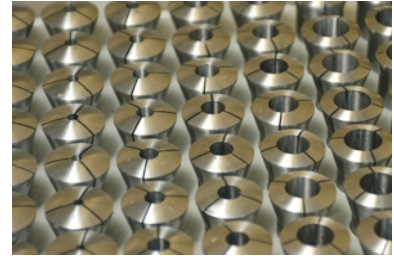
Collets W20

1930704-Z

Adaptor for collets W20 for fitting taper MT4

5558101-Z

Set of 37 collets W20 dia. 2-20mm, in steps of 0.5mm
Single collets orders possible



1930539-Z

Collet W20 dia. 0.5mm



1930540-Z

Collet W20 dia. 1mm

1930541-Z

Collet W20 dia. 1.5mm

1930400-Z

Collet W20 dia. 2mm

1930401-Z

Collet W20 dia. 2.5mm

1930402-Z

Collet W20 dia. 3mm

1930403-Z

Collet W20 dia. 3.5mm

1930404-Z

Collet W20 dia. 4mm

1930405-Z

Collet W20 dia. 4.5mm

1930406-Z

Collet W20 dia. 5mm

1930407-Z

Collet W20 dia. 5.5mm

1930408-Z
Collet W20 dia. 6mm

1930409-Z
Collet W20 dia. 6.5mm

1930410-Z
Collet W20 dia. 7mm

1930411-Z
Collet W20 dia. 7.5mm

1930412-Z
Collet W20 dia. 8mm

1930413-Z
Collet W20 dia. 8.5mm

1930414-Z
Collet W20 dia. 9mm

1930415-Z
Collet W20 dia. 9.5mm

1930416-Z
Collet W20 dia. 10mm

1930417-Z
Collet W20 dia. 10.5mm

1930418-Z
Collet W20 dia. 11mm

1930419-Z
Collet W20 dia. 11.5mm

1930420-Z
Collet W20 dia. 12mm

1930421-Z
Collet W20 dia. 12.5mm

1930422-Z
Collet W20 dia. 13mm

1930423-Z
Collet W20 dia. 13.5mm

1930424-Z
Collet W20 dia. 14mm

1930425-Z
Collet W20 dia. 14.5mm

1930426-Z
Collet W20 dia. 15mm

1930427-Z
Collet W20 dia. 15.5mm

1930428-Z
Collet W20 dia. 16mm

1930429-Z
Collet W20 dia. 16.5mm

1930430-Z
Collet W20 dia. 17mm

1930431-Z
Collet W20 dia. 17.5mm

1930432-Z
Collet W20 dia. 18mm

1930433-Z
Collet W20 dia. 18.5mm

1930434-Z
Collet W20 dia. 19mm

1930435-Z
Collet W20 dia. 19.5mm

1930436-Z
Collet W20 dia. 20mm

Adaptor for chuck (blank)

1921732-Z

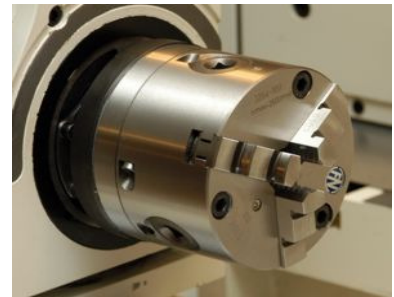
Flange blank dia. 105mm / 4.13" with fitting taper MT4 for mounting on clamping devices for live spindle grinding or for customer devices or for usage as face plate. Taper hardened and finished, flange not hardened and rough.

Note: Requires manual draw-bar for locking clamping devices

Three-jaw chuck (manually operated)

1930706-Z

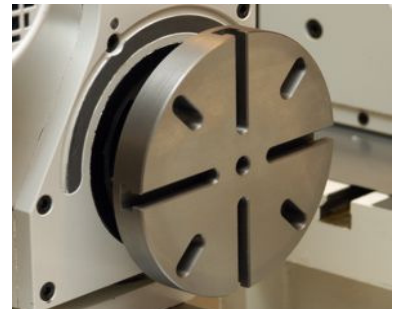
Three-jaw chuck dia. 100mm / 3.94" for fitting taper MT4



Face plate

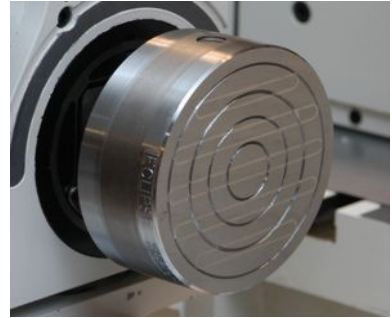
1930708-Z

Face plate dia. 150mm / 5.91" for fitting taper MT4



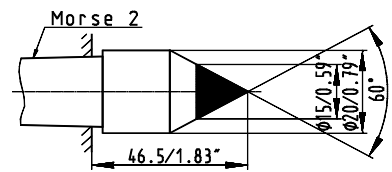
Magnetic chuck

1930707-Z
Magnetic chuck dia. 120mm / 4.72"
for fitting taper MT4

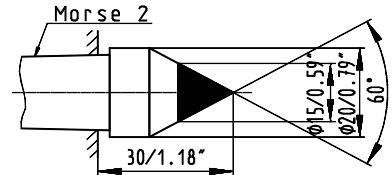


Centres with adaptor MT2

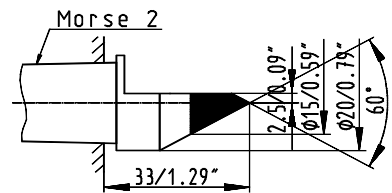
0138004-Z
Full centre long dia. 20mm/.79" MT2



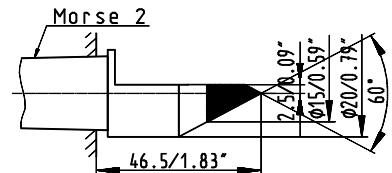
0166025-Z
Full centre short dia. 20mm/.79" MT2



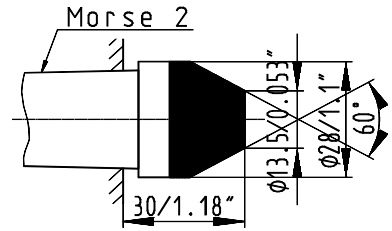
0810052-Z
Half centre short dia. 20/2.5mm/.79/.10" MT2



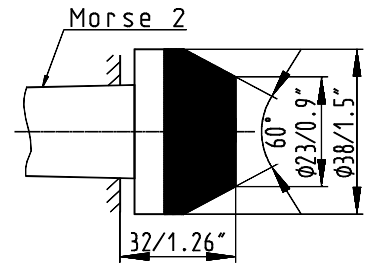
0138005-Z
Half centre long dia. 20/2.5mm/.79/.10" MT2



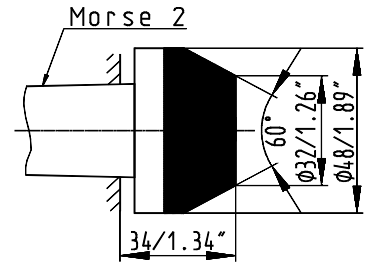
0166026-Z
Blunt centre long dia. 28mm/1.1" MT2



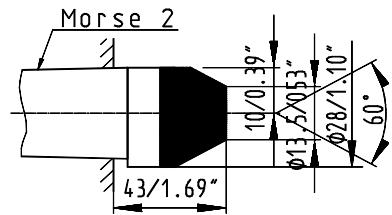
0166029-Z
Blunt center long dia. 38mm/1.5" MT2



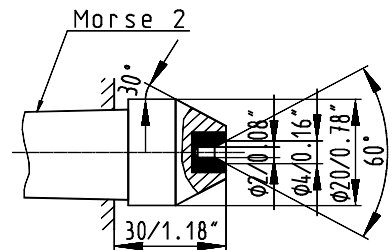
0166030-Z
Blunt center long dia. 48mm/1.89" MT2



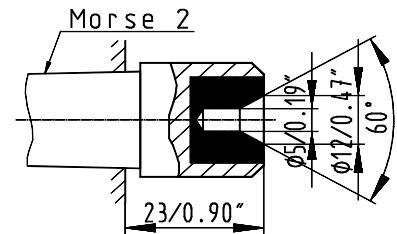
0138006-Z
Blunt half centre dia. 28/10mm/1.1/.4" MT2



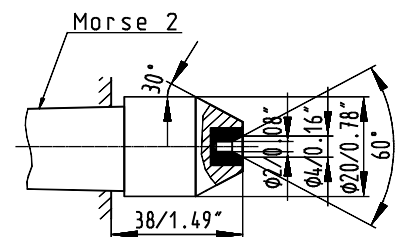
0809087-Z
Female full centre short dia. 4mm/.157" MT2



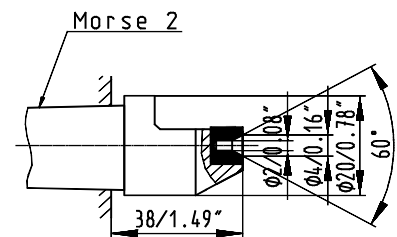
0865023-Z
Female full centre short dia. 12mm/.47" MT2



0810031-Z
Female full centre long dia. 4mm/.157" MT2



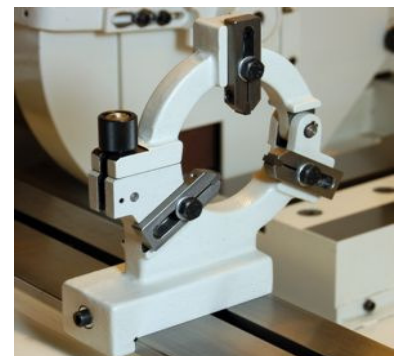
0810032-Z
Female half centre dia. 4/2.5mm/.157"/.10" MT2



Steady

1915602-Z
Two-point steady for dia. 2 - 30 mm / .08 - 1.18"
(centre height 100 mm / 3.94")
from series 32

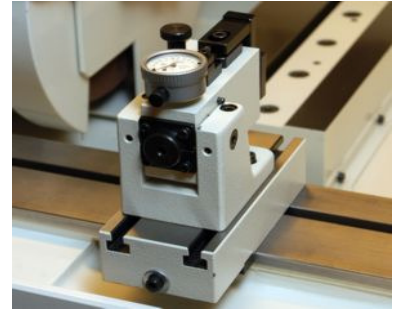
1914603-Z
Three-jaw steady for dia. 2.5-80mm / 0.10-3.15"
(centre height 100mm / 3.94")
from series 32
Note: Dial gauging radial see chapter "various"



Dressing attachment (non controled)

1913608-Z

Manual hinged dressing attachment
attachable to the workpiece table, movable in
direction X. (for center height 100mm / 3.94")
from series 32



1924602-Z

Swivelling dressing attachment attachable
to the workpiece table, for dressing of
external grinding wheels
(for center height 100mm / 3.94")
from series 32

1919605-Z

Radius dressing attachment, hand operated
for convex and concave radii of 0-18mm / 0-.71"
from series 32

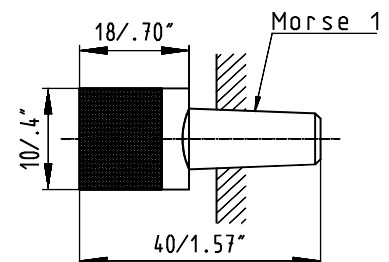
1919606-Z

Radius dressing attachment, hand operated
for convex and concave radii of 0-.71"
from series 32

Dressing tools with fitting taper MT1 shortened

5560732-Z

Needle fliese MT1 shortened, type DV/10 NX
hight 10mm / .39", length 18mm / .71"



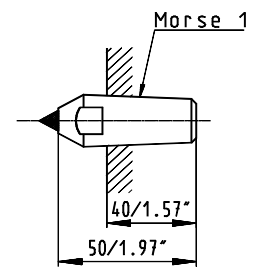
5560731-Z

Needle fliese MT1 shortened, type DV/20 NX
hight 20mm / .79", length 20mm / .79"

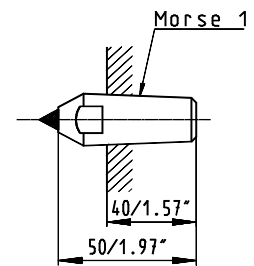
5560511-Z
Needle fliese MT1 shortened, type MKD-3-0640 DV/10
hight 10mm / .39", length 18mm / .71"

5560512-Z
Needle fliese MT1 shortened, type CVD-3-0640 DV/10
hight 10mm / .39", length 18mm / .71"

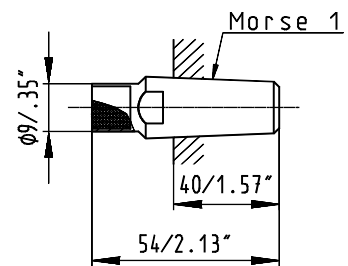
5560301-Z
Single point diamond 0,1 carat



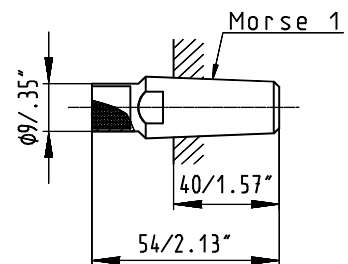
5560020-Z
Single point diamond 1 carat



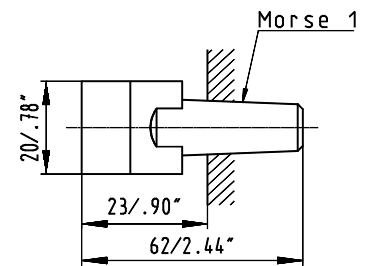
5560520-Z
Impregnated diamond grit 25



5560521-Z
Impregnated diamond grit 50

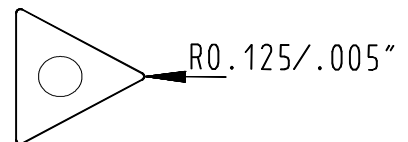


5560720-Z
Grain fliese diamond 1.15mm / .045"

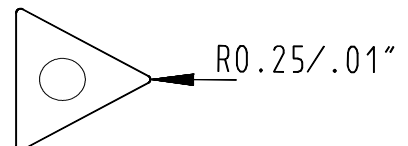


PCD-dressing plate with sep. fitting taper

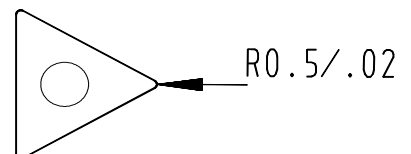
5560721-Z
PCD-dressing plate R 0.125mm/.005"



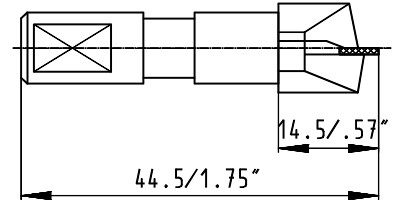
5560722-Z
PCD-dressing plate R 0.25mm/.01"



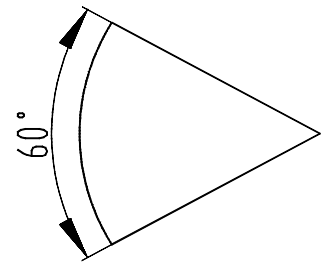
5560723-Z
PCD-dressing plate R 0.5mm/.02"



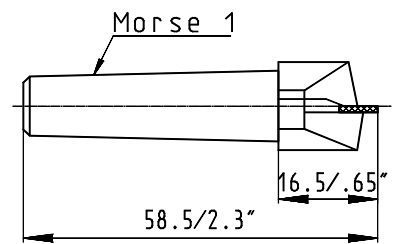
5560725-Z
Adaptor for polycrystalline diamond dressing plates



5560724-Z
Polycrystalline diamond dressing

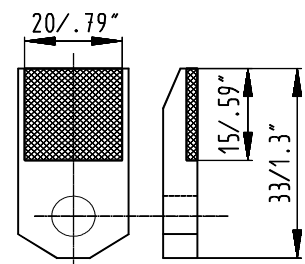


5560726-Z
Adaptor for polycrystalline diamond dressing plates

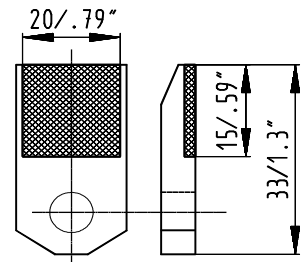


Grain fliese diamonds with sep. fitting taper

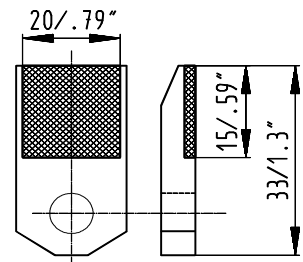
5560712-Z
Grain fliese diamond 1.15mm/.045"



5560714-Z
 Grain fliese diamond 0.9mm/.035"

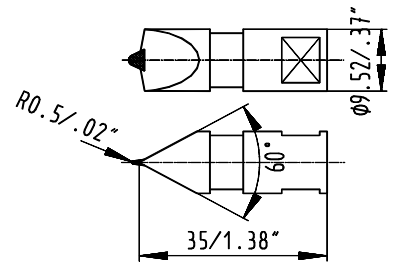


5560719-Z
 Grain fliese diamond 0.75mm/.03"

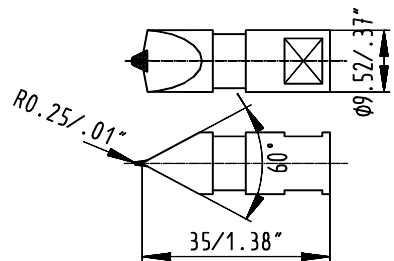


Dressing tools with cylindrical shaft dia 9.52x35mm

0844186-Z
 Single point diamond 0.45 carat, 60 deg, R 0.5mm
 / .0196 (cylindrical shaft dia. 9.52mm / .07")

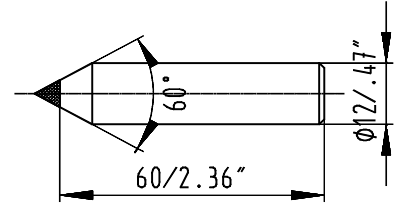


5560303-Z
 Single point diamond 0.45 carat, 60 deg, R 0.25mm
 / .01" (cylindrical shaft dia. 9.52mm / 0.36")

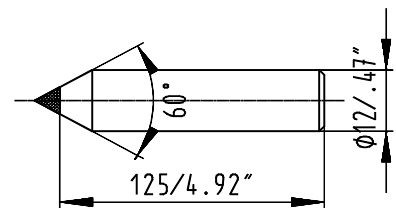


1920080-Z
 Stylus R 0.25mm / .01"
 (cylindrical shaft dia. 9.52mm / 0.36")

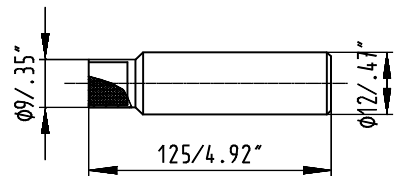
5560006-Z
Single point diamond 1 carat



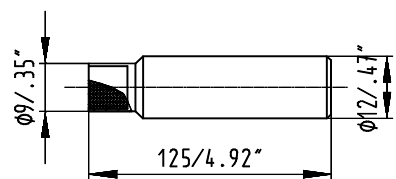
5560010-Z
Single point diamond 1 carat dia 12mm/0.47", L
125mm/4.92"



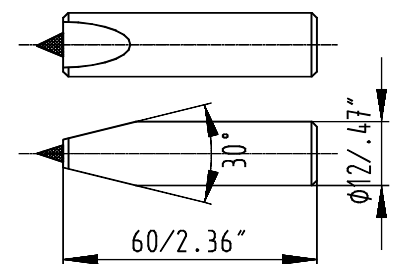
5560505-Z
Impregnated diamond grit 25



5560506-Z
Impregnated diamond grit 50



5560202-Z
Single point diamond 1 carat



Machine lighting

1949604-Z
Halogen bulb 24 Volt, 20 Watt



First cut recognition

1332636-Z
Sensitron pick-up with magnetic base
incl. connection cable (length 3m).
Note: Not for use with Sensitron 2
from series 168 until series 173



2404774-Z
First cut sensor with magnetic base and connection
cable, length 4m
from series 174



Marposs

2431616-Z

Diameter measuring stand Marposs DIRAC 4N for bore control.

- Diameter measuring range 4-50mm/.16-1.97" (vertical measuring arrangement)
- Repeatability <0.0001mm/.000,004"
- Precision <0.0005mm/.000,02
- Thermal drift <0.0001mm/.000,004"/°K
- Measuring depth 20mm/.79" (other measuring depth on request)
- Cable length 3m.

Condition:

- Occupied one measuring circuit
- For each diameter a centering measuring arbor is necessary (evtl. extension cable)

from series 172

2429651-ZK

Centering arbor for match-measuring tripod DIRAC 4N for measuring inside diameter ofmm according to drawing No. (The diameter must be within the measuring range of the match-measuring tripod).

Note: Workpiece-dependent, 1 x per inside diameter required

from series 172

Internal measuring arbor Marposs M1 electron BASE

2429653-Z

Hand measuring arbor Marposs M1 electron Base:

- Diameter range 9-15mm/.35-.59"
- Precision <0.001mm/.000,04"
- Max. measuring depth 50mm/1.97"
- Cable length 3 m

Note: For each diameter a measuring sleeve is necessary (evtl. extension cable)

from series 172

2429655-ZK

Measuring sleeve for hand measuring arbor Marposs M1 electron Base dia. 9-15mm / .35-.59", consisting of guiding sleeve and measuring probe for dia.mm.

Remark: Workpiece-dependent, 1 x per inside diameter required

from series 172

2429657-Z

Hand measuring arbor Marposs M1 electron Base:

- Diameter range 15-36mm/.59-1.42"
- Precision <0.001mm/.000.04"
- Max. measuring depth 50mm/1.97"
- Cable length 3m

Note: For each diameter a measuring sleeve is necessary (evtl. extension cable)
from series 172

2429659-ZK

Measuring sleeve for hand measuring arbor Marposs M1 electron Base dia. 15-36mm / .59-1.42", consisting of guiding sleeve and measuring probe for dia.mm.
Remark: Workpiece dependent, 1x per internal diameter necessary

from series 172

2429661-Z

Hand measuring arbor Marposs M1 electron Base:

- Diameter range 36-120mm/1.42-4.72"
- Precision <0.001mm/.000,04"
- Max. measuring depth 50mm/1.97"
- Cable length 3m

Condition: For each diameter a measuring sleeve is necessary (evtl. extension cable)
from series 172

2429663-ZK

Measuring sleeve for hand measuring arbor Marposs M1 electron Base dia. 36-120mm / 1.42-4.72", consisting of guiding sleeve and measuring probe for dia.mm.
Remark: Workpiece dependent, 1x per internal diameter necessary

from series 172

Diameter measuring stand

2429683-Z

Diameter measuring stand Movomatic CI213 for bore control (vertical measuring arrangement).

- Measuring range 4-150mm/.16-5.91"
- Repeatability <0.0001mm/.000,004" measuring depth 1 x nominal diameter
- Precision <0.0005mm/.000,2"
- Cable length 3m

Condition:

- Occupied one measuring circuit
- For each diameter a centering measuring arbor is necessary (evtl. extension cable)



Centering measuring arbor

2429685-ZK

Measuring and centering arbor within dia. 4-20mm / .16-.79" for match-measuring tripod CI213, designed for dia....mm according to drawing No.

Measuring depth:

- Minimum 0.5mm / .02"
- Standard = 1 x nominal diameter
- Absolute maximum = 3 x nominal diameter

Note: Workpiece-dependent, 1 x per inside diameter required



2429817-ZK

Measuring and centering arbor within Ø20.1-40mm /079-1.57" for match-measuring tripod CI213, designed for dia....mm according to drawing No.

Measuring depth:

- Minimum 0.5mm/.02"
- Standard = 1 x nominal diameter
- Absolute maximum = 3 x nominal diameter

Note: Workpiece-dependent, 1 x per inside diameter required



2429818-ZK

Measuring and centering arbor within dia. 40.1-100mm / 1.57-3.94" for match-measuring tripod CI213, designed for dia....mm according to drawing No.

Measuring depth:

- Minimum 0.5mm / .02"
- Standard = 1 x nominal diameter
- Absolute maximum = 3 x nominal diameter

Note: Workpiece-dependent, 1 x per inside diameter required



Hydraulic and lubricating oil

For longitudinal slide: Oil Shell Tonna S32

For wheelhead: Oil Mobil Velocite 3

For internal grinding spindles with belt drive: Oel Mobil DTE 24

For high frequency motor spindles Fischer: Oil Motorex

Spindle Lube ISO VG 68

For workhead: Oel Mobil DTE 22

For tailstock fine adjustment: Fett Mobilux EP 023

For hydraulic: Oil Shell Tonna S32

Oil Shell Tonna S32

5601806-Z

5 litre can oil Shell Tonna S32



5601807-Z

3 cans at 20 litres oil Shell Tonna S32



Oil Mobil Velocite 3

5601826-Z

5 litre can oil MOBIL Velocite 3

5601800-Z
20 litre can oil MOBIL Velocite 3

Oil Mobil DTE 22

5601833-Z
1 litre can oil Mobil DTE 22



5601827-Z
5 litre can oil MOBIL DTE 22



Oil Mobil DTE 24

5601829-Z
5 litre can oil MOBIL DTE 24



5601816-Z
2 cans of 10 litre oil MOBILE DTE 24



5601814-Z
50kg drum oil MOBIL DTE 24



Oil Motorex Spindle Lube ISO VG 68

5601869-Z
4 litre can oil Motorex Spindle Lube ISO VG 68
cleanliness class 13/10 according ISO 4406



Grease Mobilux EP 023

5601818-Z
0.5 kg grease Mobilux EP 023

Filter paper

5490113-Z
Filter paper medium OL40, roll of 200m,
width 700mm/27.56"



5490114-Z
Filter paper fine OL50, roll of 150m,
width 700mm/27.56"



Coolant

5601412-Z

5 litre can of coolant CASTROL Hysol R



5601420-Z

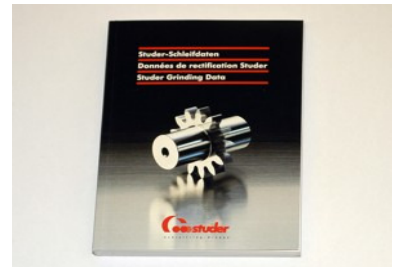
15 litres can of coolant CASTROL Hysol R



Machine documentation

9904256-Z

Booklet Studer Grinding Data (pocket file)



Dial indicators

For longitudinal table: Dial gauging radial

For sine stop for table: Dial gauging radial

For table stop: Dial gauging radial

For steadie: Dial gauging radial

For pivoting measuring unit: Dial gauging radial

For dressing attachment: Dial gauging radial

5530018-Z
Radial dial gauge, metric (division 0.002mm)



5530118-Z
Radial dial gauge, inch (division 0.0001")



Auxiliary accessories

1948600-Z
Steel tool cabinet

5552514-Z
Measuring instrument Tesatronic with cable and
1 gauge head, metric + inch

2419869-Z

Measuring instrument Movomatic ELC 440 with cable
and 1 gauge head TAM 82 metric or inch (to be
defined with order)