

The accessories.

Internal Cylindrical Grinding Machine



S145 - The Universal

for a large range of applications.

Contents

Page

External grinding motor spindle with 2 lubrication connections	4
Wheel adaptor, nominal dia. 40mm / 1.57"	4
Extraction tool	4
Static balancing	4
External grinding wheels	5
Grinding wheel dia. 250mm / 9.84", bore 76.2mm / 3"	5
Internal grinding unit	6
High frequency moter spindles	7
Internal grinding arbors HJND 21	9
Internal grinding arbors HJND 28	10
Internal grinding arbors HJND 50	11

Fritz Studer AG
CH-3602 Thun
www.studer.com
info@studer.com

Telefon +41-33-439 11 11
Telefax +41-33-439 11 12
Bank: UBS AG
CH-3001 Bern

Geschäftsführung:
Dr.-Ing. H.-Jürgen Prokop (Vors.)
Dipl.-Ing. Fred W. Gaegauf
Stephan Nell



Studer Schaudt GmbH
D-70329 Stuttgart

Dr. Ing. Ingolf Lammich

Internal grinding arbors HJND 60	12
Internal grinding arbors HJND 80	13
Face grinding arbor HJNP	14
Chuck HJNZ	14
Collets ER11	15
Collets ER20	16
Collets ER25	17
Additional bolts (wheel adaptors) for internal grinding arbors	18
Wheels for internal grinding arbors	19
Weels for chucks	24
Wheels for face grinding arbor	25
Accessories for workhead	25
Collets W20	25
Collets W25	29
Collets B32	33
Adaptor for chucks	37
Adaptor for chuck (blank)	37
Three-jaw chuck (manually operated)	38
Four-jaw manually operated chuck (spiral chuck)	40
Face plate	40
Magnetic chuck	41
Power chuck	42
Steady	43
Dressing attachment (non controled)	44
Dressing turbine	44
Spindle holder	45
M-sensor for dressing spindle	46
Dressing tools with fitting taper MT1 shortened	46
PCD-dressing plate with sep. fitting taper	48
dressing motor spindle dia. 50mm / 1.97"	48
Auxiliary attachment for the adjustment of the dressing tool height	49
Footpedal	49
First cut recognition	49
Interface card for external PC	50

Fritz Studer AG
 CH-3602 Thun
 www.studer.com
 info@studer.com

Telefon +41-33-439 11 11
 Telefax +41-33-439 11 12
 Bank: UBS AG
 CH-3001 Bern

Geschäftsführung:
 Dr.-Ing. H.-Jürgen Prokop (Vors.)
 Dipl.-Ing. Fred W. Gaegauf
 Stephan Nell



Studer Schaudt GmbH
 D-70329 Stuttgart

Dr. Ing. Ingolf Lammich

Input and output units	51
Communication software	52
Accessories for measuring head	52
Hydraulic and lubricating oil	52
Oil Shell Tonna S32	53
Oil Mobil DTE 24	53
Oil Motorex Spindle Lube ISO VG46	54
Oil Motorex Spindle Lube ISO VG 68	54
Filter paper	54
Coolant	54
Corrosion protection agents	55
Filter mat for grinding mist extraction unit	56
Machine documentation	56
Various	56
Auxiliary accessories	57



External grinding motor spindle with 2 lubrication connections

2667627-Z

External grinding motor spindle Fischer MFVS 1407 /7000min-1/10 kW dia. 140mm / 5.51" according to Studer specification 1330 348A with shaft end taper ratio 1:10, nominal dia. 40mm / 1.57". Oil-air lubrication with 2 lubrication connections and water cooling. Incl. testing and initial lubrication, if spindle is ordered together with the machine.

Notes:

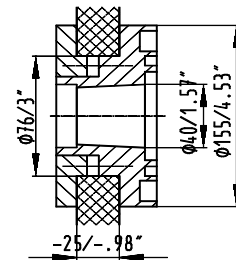
- Machine is to be equipped with external grinding spindle holder
 - Machine is to be equipped with oil-air lubrication for 2 lubrication connections
- from series 43

Wheel adaptor, nominal dia. 40mm / 1.57"

2812717-Z

Wheel adaptor dia. 250mm / 9.84" with bore dia. 76.2mm / 3" for grinding wheel, width 20-25mm / .79-1" form1 with tapered shaft ends 1:10 nominal dia. 40mm / 1.57". Extractor thread M40x1.5mm.

Note: Depending on the guard, the max. grinding wheel width will be reduced



Extraction tool

2667634-Z

Extraction tool for wheel adaptors, for shaft end with nominal dia. 40mm / 1.57"

Static balancing

2416600-Z

Balancing equipment dia. up to 400mm / 15.75" for static balancing of the grinding wheel outside of the machine.

Note: Requires the respective balancing mandrel for grinding wheels



2670609-Z

Balancing arbor for grinding wheels
with nominal dia. 76.2mm / 3", length 285mm
/ 11.22" for balancing equipment dia. 400mm
/ 15.75"

External grinding wheels

General application of abrasives

11C Silicon Carbides for:

Cast iron / tungsten carbide / glass / plastics / non-ferrous
metals / ceramics / stainless, acid and heat resistant steel /
hardened steel 63 HRc and higher / nitriding steel.
hardened steel 63 HRc and higher / nitriding steel.

54A White aluminium oxide for:

Non-alloyed, alloyed, unhardened and hardened steel up to
63 HRc (carbon content up to 0.5% / stainless, acid and
heat resistant steel / nitriding steel (untreated) / cast steel
nodular cast iron / tool steel / hard-chrome plated steel.

81A Ceramic aluminium oxide:

Difficult-to-grind steel and alloys (tool steel, high speed
steel) from soft state to 64 HRc / cast steel / cast iron

The following abrasives should no longer be used:

42A, 53A, 57A Pure aluminium oxide was replaced by 54A Pure aluminium oxide

Grinding wheel dia. 250mm / 9.84", bore 76.2mm / 3"

5585230-Z

Grinding wheel dia. 250x20x76.2mm F1 /
9.84x0.79x3" form 1,
57A 80 H 8 V. Cutting speed 50m/s / 9840sfpm.

Note: No longer usable for new quotes
until series 49

5585324-Z

Grinding wheel dia. 250x20x76.2mm F1 /
9.84x0.79x3" form 1,
11C 120 H 5 V. Cutting speed 50m/s / 9840sfpm

5585334-Z

Grinding wheel dia. 250x20x76.2mm F1N /
9.84x0.79x3" form 1N,
54A 120 H 15 VPLF604W.
Cutting speed 50m/s / 9840sfpm

5585327-Z

Grinding wheel dia. 250x25x76.2mm F1 /
9.84x0.98x3" form 1,
11C 80 J 15 VPLF. Cutting speed 50m/s / 9840sfpm.

Note: No longer usable for new quotes
until series 49

5585422-Z

Grinding wheel dia. 250x25x76.2mm F1 /
9.84x0.98x3" form 1,
64A 60 H 15 VP. Cutting speed 50m/s / 9840sfpm.

Note: No longer usable for new quotes
until series 49

5585104-Z

Grinding wheel dia. 250x25x76.2mm F1N /
9.84x0.98x3" form 1N,
64A 80 H 15 VP. Cutting speed 50m/s / 9840sfpm.

Note: No longer usable for new quotes,
was replaced by selling no 5585335

5585335-Z

Grinding wheel dia. 250x25x76.2mm F1N /
9.84x0.98x3" form 1N / $v=60^\circ$ $x=3$,
81A 80 H 8 V601W.
Cutting speed 50m/s / 9840sfpm

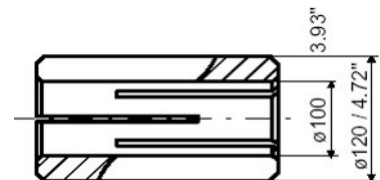
Internal grinding unit

1826033-Z

Reduction sleeve dia. 100/80mm / 3.94"/3.15".
For mounting of a spindle dia. 80mm / 3.15"
in a spindle holder dia. 100mm / 3.94"

2417110-Z

Reduction sleeve dia. 120/100mm / 4.72"/3.94".
For mounting of a spindle dia. 100mm / 3.94"
in a spindle holder dia. 120mm / 4.72"



5600001-Z

Set of 3 packages consisting of adhesive and hardener
for mounting of internal grinding wheels on
threaded bolts

until series 45

5600032-Z

Package consisting of adhesive and hardener for mounting of internal grinding wheels on threaded bolts

High frequency motor spindles

General remark for high frequency ID-motor spindles:

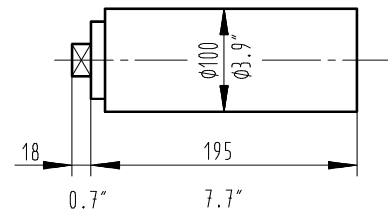
- Incl. test run and first lubrication, if spindle is ordered together with the machine
- Depending on the diameter of the holder for internal grinding spindle, reduction sleeves are necessary

2917624-Z

Internal grinding motor spindle Fischer MFZ 10120 (120'000min-1 / 2kW) dia. 100mm / 3.94" according to Studer specification 1330348A with tool holding fixture for collets type D8.

Oil-air lubrication with 2 lubrication connections and water cooling.

Note: Machine is to be equipped with oil-air lubrication for 2 lubrication connections until series 43

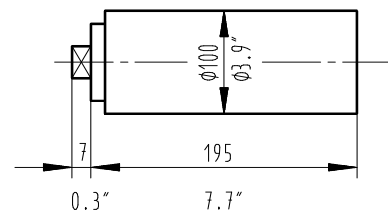


2917611-Z

Internal grinding motor spindle Fischer MFN 10120 (120'000min-1 / 2kW) dia. 100mm / 3.94" according to Studer specification 1330348A with tool holding fixture HJND 80.

Oil-air lubrication with 2 lubrication connections and water cooling.

Note: Machine is to be equipped with oil-air lubrication for 2 lubrication connections until series 43



HF internal grinding motor spindles with 4 lubrication connections

General notes for HF internal grinding motor spindles:

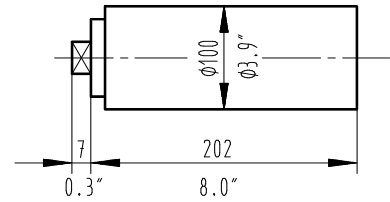
- Incl. testing and initial lubrication, if spindle is ordered together with the machine
- Reduction sleeves required depending on the diameter of the internal grinding attachment and the motor spindles

2667695-Z

Internal grinding motor spindle Fischer MFM 10120 (120'000min-1 / 3.5kW) dia. 100mm / 3.94" according to Studer specification 1330348A with tool holding fixture HJND 60.

Oil-air lubrication with 4 lubrication connections and water cooling.

Note: Machine is to be equipped with oil-air lubrication for 4 lubrication connections from series 43

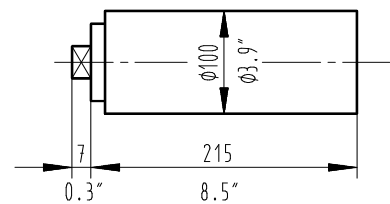


2667666-Z

Internal grinding motor spindle Fischer MFM 1090 (90'000min-1 / 4.2kW) dia. 100mm / 3.94" according to Studer specification 1330348A with tool holding fixture HJND 50.

Oil-air lubrication with 4 lubrication connections and water cooling.

Note: Machine is to be equipped with oil-air lubrication for 4 lubrication connections from series 43

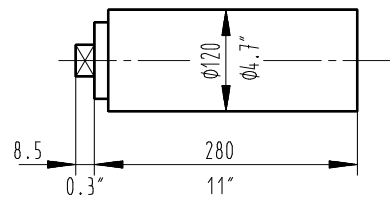


2667629-Z

Internal grinding motor spindle Fischer MFM 1242/60 (42000-60000min-1 / 10 kW), multi-range spindle dia. 120mm / 4.72" according to Studer specification 1330348A with tool holding fixture HJND 28.

Oil-air lubrication with 4 lubrication connections and water cooling.

Note: Machine is to be equipped with oil-air lubrication for 4 lubrication connections from series 43

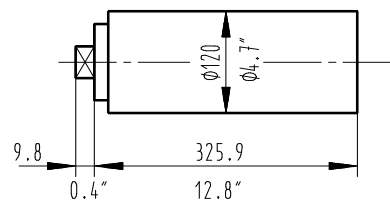


2667628-Z

Internal grinding motor spindle Fischer MFM 1224/42 (24'000-42'000min-1 / 15 kW), multi-range spindle dia. 120mm / 4.72" according to Studer specification 1330348A with tool holding fixture HJND 21.

Oil-air lubrication with 4 lubrication connections and water cooling.

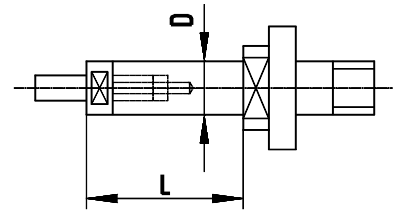
Note: Machine is to be equipped with oil-air lubrication for 4 lubrication connections from series 43



Internal grinding arbors HJND 21

5552393-Z

Grinding arbor HJND 21-1220 dia. 12x20mm



5552394-Z

Grinding arbor HJND 21-1235 dia. 12x35mm

5552395-Z

Grinding arbor HJND 21-1250 dia. 12x50mm

5552325-Z

Grinding arbor HJND 21-1625 dia. 16x25mm

5552326-Z

Grinding arbor HJND 21-1645 dia. 16x45mm

5552327-Z

Grinding arbor HJND 21-1665 dia. 16x65mm

5552328-Z

Grinding arbor HJND 21-2030 dia. 20x30mm

5552329-Z

Grinding arbor HJND 21-2060 dia. 20x60mm

5552330-Z

Grinding arbor HJND 21-2090 dia. 20x90mm

5552331-Z

Grinding arbor HJND 21-2535 dia. 25x35mm

5552332-Z

Grinding arbor HJND 21-2575 dia. 25x75mm

5552333-Z

Grinding arbor HJND 21-25115 dia. 25x115mm

5552334-Z

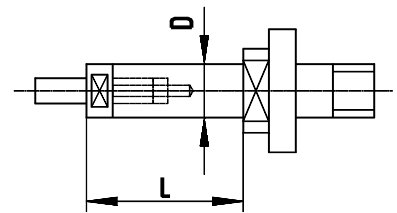
Grinding arbor HJND 21-3240 dia. 32x40mm

5552335-Z
Grinding arbor HJND 21-3290 dia. 32x90mm

5552336-Z
Grinding arbor HJND 21-32140 dia. 32x140mm

Internal grinding arbors HJND 28

5552313-Z
Grinding arbor HJND 28-1220 dia. 12x20mm



5552314-Z
Grinding arbor HJND 28-1235 dia. 12x35mm

5552315-Z
Grinding arbor HJND 28-1250 dia. 12x50mm

5552316-Z
Grinding arbor HJND 28-1625 dia. 16x25mm

5552317-Z
Grinding arbor HJND 28-1645 dia. 16x45mm

5552318-Z
Grinding arbor HJND 28-1665 dia. 16x65mm

5552319-Z
Grinding arbor HJND 28-2030 dia. 20x30mm

5552320-Z
Grinding arbor HJND 28-2060 dia. 20x60mm

5552321-Z
Grinding arbor HJND 28-2090 dia. 20x90mm

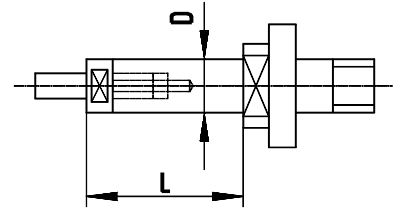
5552322-Z
Grinding arbor HJND 28-2535 dia. 25x35mm

5552323-Z
Grinding arbor HJND 28-2575 dia. 25x75mm

5552324-Z
Grinding arbor HJND 28-25115 dia. 25x115mm

Internal grinding arbors HJND 50

5552277-Z
Grinding arbor HJND 50-514 dia. 5x14mm



5552278-Z
Grinding arbor HJND 50-520 dia. 5x20mm

5552279-Z
Grinding arbor HJND 50-528 dia. 5x28mm

5552280-Z
Grinding arbor HJND 50-716 dia. 7x16mm

5552281-Z
Grinding arbor HJND 50-725 dia. 7x25mm

5552282-Z
Grinding arbor HJND 50-736 dia. 7x36mm

5552283-Z
Grinding arbor HJND 50-918 dia. 9x18mm

5552284-Z
Grinding arbor HJND 50-930 dia. 9x30mm

5552285-Z
Grinding arbor HJND 50-945 dia. 9x45mm

5552286-Z
Grinding arbor HJND 50-1220 dia. 12x20mm

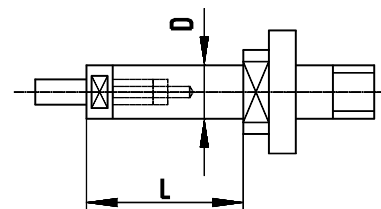
5552287-Z
Grinding arbor HJND 50-1235 dia. 12x35mm

5552288-Z
Grinding arbor HJND 50-1250 dia. 12x50mm

Internal grinding arbors HJND 60

5552265-Z

Grinding arbor HJND 60-412 dia. 4x12mm



5552266-Z

Grinding arbor HJND 60-418 dia. 4x18mm

5552267-Z

Grinding arbor HJND 60-424 dia. 4x24mm

5552268-Z

Grinding arbor HJND 60-514 dia. 5x14mm

5552269-Z

Grinding arbor HJND 60-520 dia. 5x20mm

5552270-Z

Grinding arbor HJND 60-528 dia. 5x28mm

5552271-Z

Grinding arbor HJND 60-716 dia. 7x16mm

5552272-Z

Grinding arbor HJND 60-725 dia. 7x25mm

5552273-Z

Grinding arbor HJND 60-736 dia. 7x36mm

5552274-Z

Grinding arbor HJND 60-918 dia. 9x18mm

5552275-Z

Grinding arbor HJND 60-930 dia. 9x30mm

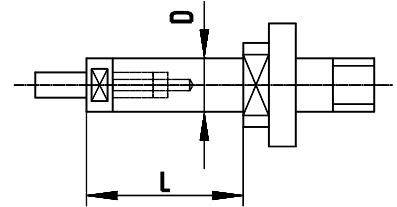
5552276-Z

Grinding arbor HJND 60-945 dia. 9x45mm

Internal grinding arbors HJND 80

5552253-Z

Grinding arbor HJND 80-308 dia. 3x8mm



5552254-Z

Grinding arbor HJND 80-312 dia. 3x12mm

5552255-Z

Grinding arbor HJND 80-317 dia. 3x17mm

5552256-Z

Grinding arbor HJND 80-3510 dia. 3.5x10mm

5552257-Z

Grinding arbor HJND 80-3515 dia. 3.5x15mm

5552258-Z

Grinding arbor HJND 80-3520 dia. 3.5x20mm

5552259-Z

Grinding arbor HJND 80-412 dia. 4x12mm

5552260-Z

Grinding arbor HJND 80-418 dia. 4x18mm

5552261-Z

Grinding arbor HJND 80-424 dia. 4x24mm

5552262-Z

Grinding arbor HJND 80-514 dia. 5x14mm

5552263-Z

Grinding arbor HJND 80-520 dia. 5x20mm

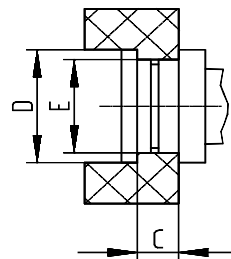
5552264-Z

Grinding arbor HJND 80-528 dia. 5x28mm

Face grinding arbor HJNP

5552221-Z

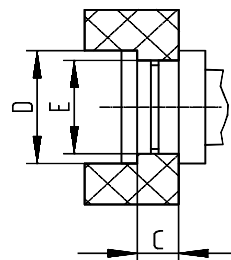
Face grinding arbor HJNP 21



5552220-Z

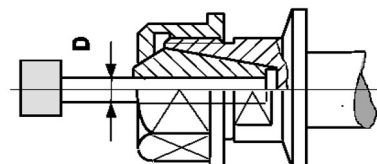
Face grinding arbor HJNP 28

Chuck HJNZ



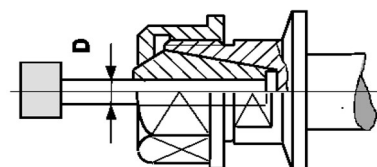
5552397-Z

Chuck HJNZ 21 +2 collets ER25 dia. 3+6mm

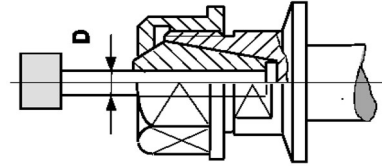


5552211-Z

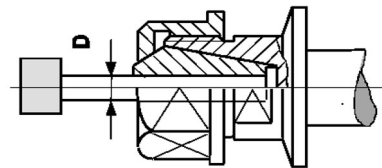
Chuck HJNZ 28 +2 collets ER20 dia. 3+6mm



5552208-Z
Chuck HJNZ 50 +2 collets ER11 dia. 3+6mm

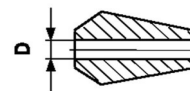


5552207-Z
Chuck HJNZ 60 +2 collets ER11 dia. 3+6mm



Collets ER11

2026510-Z
Collet ER11 dia. 1mm



2026511-Z
Collet ER11 dia. 1.5mm

2026512-Z
Collet ER11 dia. 2mm

2026513-Z
Collet ER11 dia. 2.5mm

2026514-Z
Collet ER11 dia. 3mm

2026515-Z
Collet ER11 dia. 3.5mm

2026516-Z
Collet ER11 dia. 4mm

2026517-Z
Collet ER11 dia. 4.5mm

2026518-Z
Collet ER11 dia. 5mm

2026519-Z
Collet ER11 dia. 5.5mm

2026520-Z
Collet ER11 dia. 6mm

Collets ER20

2026552-Z
Collet ER20 dia. 2mm

2026553-Z
Collet ER20 dia. 3mm

2026554-Z
Collet ER20 dia. 4mm

2026555-Z
Collet ER20 dia. 5mm

2026556-Z
Collet ER20 dia. 6mm

2026557-Z
Collet ER20 dia. 7mm

2026558-Z
Collet ER20 dia. 8mm

2026559-Z
Collet ER20 dia. 9mm

2026560-Z
Collet ER20 dia. 10mm

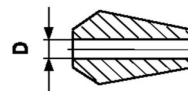
2026561-Z
Collet ER20 dia. 11mm

2026562-Z
Collet ER20 dia. 12mm

2026563-Z
Collet ER20 dia. 13mm

Collets ER25

2026564-Z
Collet ER25 dia. 2mm



2026565-Z
Collet ER25 dia. 3mm

2026566-Z
Collet ER25 dia. 4mm

2026567-Z
Collet ER25 dia. 5mm

2026568-Z
Collet ER25 dia. 6mm

2026569-Z
Collet ER25 dia. 7mm

2026570-Z
Collet ER25 dia. 8mm

2026571-Z
Collet ER25 dia. 9mm

2026572-Z
Collet ER25 dia. 10mm

2026573-Z
Collet ER25 dia. 11mm

2026574-Z
Collet ER25 dia. 12mm

2026575-Z
Collet ER25 dia. 13mm

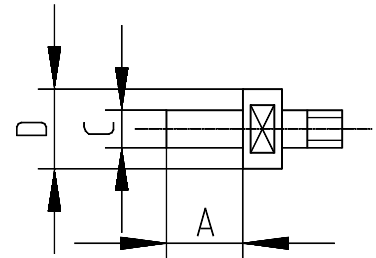
2026576-Z
Collet ER25 dia. 14mm

2026577-Z
Collet ER25 dia. 15mm

2026578-Z
Collet ER25 dia. 16mm

Additional bolts (wheel adaptors) for internal grinding arbors

5551918-Z
Set of 10 bolts dia. 3.5mm



5551944-Z
Set of 10 bolts dia. 4mm

5551939-Z
Set of 10 bolts dia. 5mm

5551921-Z
Set of 10 bolts dia. 7mm

5551922-Z
Set of 10 bolts dia. 9mm

5551940-Z
Set of 10 bolts dia. 12mm

5551924-Z
Set of 10 bolts dia. 16mm

5551941-Z
Set of 5 bolts dia. 20mm

5551942-Z
Set of 5 bolts dia. 25mm

5551943-Z
Set of 5 bolts dia. 32mm

Wheels for internal grinding arbors

General application of abrasives

11C Silicon Carbides for:

Cast iron / tungsten carbide / glass / plastics / non-ferrous metals / ceramics / stainless, acid and heat resistant steel / hardened steel 63 HRc and higher / nitriding steel.

54A Pure aluminium oxide for:

Non-alloyed, alloyed, unhardened and hardened steel up to 63 HRc (carbon content up to 0.5% / stainless, acid and heat resistant steel / nitriding steel (untreated) / cast steel nodular cast iron / tool steel / hard-chrome plated steel.

93A Ceramic aluminium oxide (30%) for:

Difficult-to-grind steel and alloys (tool steel, high speed steel) from soft state to 64 HRc / cast steel / cast iron

The following abrasives should no longer be used:

42A Pure aluminium oxide was replaced by 54A Pure aluminium oxide

64A Pure aluminium oxide was replaced by 93A Ceramic aluminium oxide

5583119-Z

Set of 10 wheels dia. 6x6x2.5mm 11C 80 G 6 V

Cutting speed 50m/s / 9840sfpm

5583041-Z

Set of 10 wheels dia. 6x6x2.5mm 54A 80 H 8 V604W

Cutting speed 50m/s / 9840sfpm

5583042-Z

Set of 10 wheels dia. Ø 6x6x2.5mm 93A 120 H 13

VP601

Cutting speed 50m/s / 9840sfpm

5583018-Z

Set of 10 wheels dia. 6x6x2.5mm 42A 80 H 8 V

Cutting speed 50m/s / 9840sfpm.

Note: No longer usable for new quotes,
was replaced by selling no 5583041

5583068-Z

Set of 10 wheels dia. 6x6x2.5mm 64A 80 H 8 V

Cutting speed 50m/s / 9840sfpm.

Note: No longer usable for new quotes,
was replaced by selling no 5583042

5583009-Z

Set of 10 Ø 8x8x2.5mm 42A 80 H 8 V

Cutting speed 50m/s / 9840sfpm.

Note: No longer usable for new quotes,
was replaced by selling no 5583043

5583059-Z

Set of 10 wheels Ø 8x8x2.5mm 64A 80 H 8 V

Cutting speed 50m/s / 9840sfpm.

Note: No longer usable for new quotes,
was replaced by selling no 5583044

5583110-Z

Set of 10 wheels dia. 8x8x2.5mm 11C 80 G 6 V

Cutting speed 50m/s / 9840sfpm

5583043-Z

Set of 10 wheels dia. 8x8x2.5mm 54A 80 H 8 V604W

Cutting speed 50m/s / 9840sfpm

5583044-Z

Set of 10 wheels dia. 8x8x2.5mm 93A 120 H 13 VP601

Cutting speed 50m/s / 9840sfpm

5583019-Z

Set of 10 wheels dia. 10x10x4mm 42A 80 H 8 V

Cutting speed 50m/s / 9840sfpm.

Note: No longer usable for new quotes,
was replaced by selling no 5583045

until series 49

5583069-Z

Set of 10 wheels dia. 10x10x4mm 64A 80 H 8 V

Cutting speed 50m/s / 9840sfpm.

Note: No longer usable for new quotes,
was replaced by selling no 5583046

5583120-Z

Set of 10 wheels dia. 10x10x4mm 11C 80 G 6 V

Cutting speed 50ms/s / 9840sfpm

5583045-Z

Set of 10 wheels dia. 10x10x4mm 54A 80 H 8 V604W

Cutting speed 50m/s / 9840sfpm

5583046-Z

Set of 10 wheels dia. 10x10x4mm 93A 120 H 13
VP601

Cutting speed 50m/s / 9840sfpm

5583011-Z

Set of 10 wheels dia. 13x13x4mm 42A 60 H 8 V
Cutting speed 50m/s / 9840sfpm.

Note: No longer usable for new quotes,
was replaced by selling no 5583047

5583061-Z

Set of 10 wheels dia. 13x13x4mm 64A 60 H 8 V
cutting speed 50m/s / 9840sfpm.

Note: No longer usable for new quotes,
was replaced by selling no 5583048

5583112-Z

Set of 10 wheels dia. 13x13x4mm 11C 60 H 15 VP
Cutting speed 50m/s / 9840sfpm

5583047-Z

Set of 10 wheels dia. 13x13x4mm 54A 80 H 8 V604W
Cutting speed 50m/s / 9840sfpm

5583048-Z

Set of 10 wheels dia. 13x13x4mm 93A 120 H 13
VP601

Cutting speed 50m/s / 9840sfpm

5583020-Z

Set of 10 wheels dia. 16x16x6mm 42A 60 H 8 V
Cutting speed 50m/s / 9840sfpm.

Note: No longer usable for new quotes,
was replaced by selling no 5583049

5583070-Z

Set of 10 wheels dia. 16x16x6mm 64A 60 H 8 V
Cutting speed 50m/s / 9840sfpm.

Note: No longer usable for new quotes,
was replaced by selling no 5583076

5583121-Z

Set of 10 wheels dia. 16x16x6mm 11C 60 H 15 VP
Cutting speed 50m/s

5583049-Z

Set of 10 wheels dia. 16x16x6mm 54A 80 H 8 V604W
Cutting speed 50m/s / 9840sfpm

5583076-Z

Set of 10 wheels dia. 16x16x6mm 93A 120 H 13
VP601
Cutting speed 50m/s / 9840sfpm

5583021-Z

Set of 10 wheels dia. 20x20x6mm 42A 60 H 8 V
cutting speed 50m/s / 9840sfpm.

Note: No longer usable for new quotes,
was replaced by selling no 5583077

5583071-Z

Set of 10 wheels dia. 20x20x6mm 64A 60 H 8 V
Cutting speed 50m/s / 9840sfpm.

Note: No longer usable for new quotes,
was replaced by selling no 5583078

5583122-Z

Set of 10 wheels Ø 20x20x6mm 11C 60 H 15 VP
Cutting speed 50m/s / 9840sfpm

5583077-Z

Set of 10 wheels dia. 20x20x6mm 54A 80 H 8 V604W
Cutting speed 50m/s / 9840sfpm

5583078-Z

Set of 10 wheels dia. 20x20x6mm 93A 120 H 13
VP601
Cutting speed 50m/s / 9840sfpm

5583022-Z

Set of 10 wheels dia. 25x25x10mm 42A 60 H 8 V
Cutting speed 50m/s / 9840sfpm.

Note: No longer usable for new quotes,
was replaced by selling no 5583079

5583072-Z

Set of 10 wheels dia. 25x25x10mm 64A 60 H 8 V
Cutting speed 50m/s / 9840sfpm.

Note: No longer usable for new quotes,
was replaced by selling no 5583080

5583123-Z

Set of 10 wheels dia. 25x25x10mm 11C 60 H 15 VP
Cutting speed 50m/s / 9840sfpm

5583079-Z

Set of 10 wheels dia. 25x25x10mm 54A 80 H 8 V604W
Cutting speed 50m/ s / 9840sfpm

5583080-Z

Set of 10 wheels dia. 25x25x10mm 93A 120 H 13
VP601
Cutting speed 50m/s / 9840sfpm

5583023-Z

Set of 5 wheels dia. 32x32x10mm 42A 60 H 8 V
Cutting speed 50m/s / 9840sfpm.

Note: No longer usable for new quotes,
was replaced by selling no 5583081

5583073-Z

Set of 5 wheels dia. 32x32x10mm 64A 60 H 8 V
Cutting speed 50m/s / 9840sfpm.

Note: No longer usable for new quotes,
was replaced by selling no 5583082

5583124-Z

Set of 5 wheels dia. 32x32x10mm 11C 60 H 15 VP
Cutting speed 50m/s / 9840sfpm

5583081-Z

Set of 5 wheels dia. 32x32x10mm 54A 80 H 8 V604W
Cutting speed 50m/s / 9840sfpm

5583082-Z

Set of 5 wheels Ø 32x32x10mm 93A 120 H 13 VP601
Cutting speed 50m/s / 9840sfpm

5583024-Z

Set of 5 wheels dia. 40x40x13mm 42A 60 H 8 V
Cutting speed 50m/s / 9840sfpm.

Note: No longer usable for new quotes,
was replaced by selling no 5583083

5583074-Z

Set of 5 wheels dia. 40x40x13mm 64A 60 H 8 V
Cutting speed 50m/s / 9840sfpm.

Note: No longer usable for new quotes,
was replaced by selling no 5583084

5583125-Z

Set of 5 wheels Ø 40x40x13mm 11C 60 H 15 VP
Cutting speed 50m/s / 9840sfpm

5583083-Z

Set of 5 wheels dia. 40x40x13mm 54A 80 H 8 V604W
Cutting speed 50m/s / 9840sfpm

5583084-Z

Set of 5 wheels dia. 40x40x13mm 93A 80 H 13 VP601
Cutting speed 50m/s / 9840sfpm

5583025-Z

Set of 5 wheels dia. 50x40x16mm 42A 60 H 8 V
Cutting speed 50m/s / 9840sfpm.

Note: No longer usable for new quotes,
was replaced by selling no 5583085

5583075-Z

Set of 5 wheels dia. 50x40x16mm 64A 60 H 8 V
Cutting speed 50m/s / 9840sfpm.

Note: No longer usable for new quotes,
was replaced by selling no 5583086

5583126-Z

Set of 5 wheels dia. 50x40x16mm 11C 60 H 15 VP
Cutting speed 50m/s / 9840sfpm

5583085-Z

Set of 5 wheels dia. 50x40x16mm 54A 80 H 8 V604W
Cutting speed 50m/s / 9840sfpm

5583086-Z

Set of 5 wheels dia. 50x40x16mm 93A 120 H 13
VP601
cutting speed 50m/s / 9840sfpm

Weels for chucks

5583601-Z

Set of 10 wheels SARUBIN 60M dia. 6mm/.24"

5583602-Z

Set of 10 wheels SARUBIN 60M dia. 8mm/.31"

5583603-Z

Set of 10 wheels SARUBIN 60M dia. 10mm/.39"

5583604-Z
Set of 10 wheels SARUBIN 60M dia. 12mm/.47"

Wheels for face grinding arbor

5584008-Z
Cup wheel 64A46 H9V dia. 80mm/3.15"

5584012-Z
Cup wheel 64A46 H9V dia. 100mm/3.94"

Accessories for workhead

2439674-Z
Cut-in ring sensor (transmitter ring) for mounting on the clamping device for live spindle grinding or its adaptors with correspondent interface for use on workheads with fitting taper ISO50.

Note: Requires correspondent sensor receiver ring on the workhead from series 43

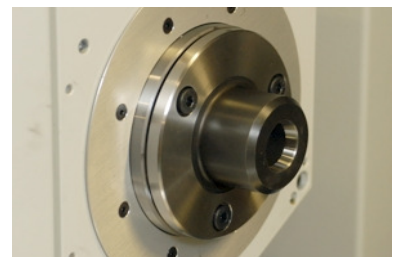
2439672-Z
Receiver ring of cut-in ring sensor for chuck workhead with fitting taper ISO50, incl. plugable connection cable (cable length 4m).

Note: For the use of centers, the receiver ring has to be detached from series 43

Collets W20

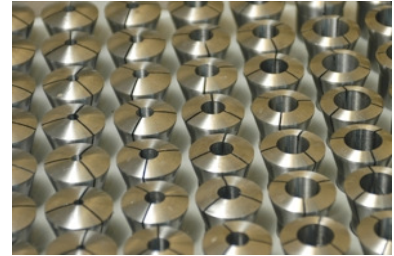
2439723-Z
Adaptor for collets W20 for fitting taper ISO50

Note: Requires manual draw-bar or clamping cylinder with clamping actuating tube



5558101-Z

Set of 37 collets W20 dia. 2-20mm, in steps of 0.5mm
Single collets orders possible



1930539-Z

Collet W20 dia. 0.5mm



1930540-Z

Collet W20 dia. 1mm

1930541-Z

Collet W20 dia. 1.5mm

1930400-Z

Collet W20 dia. 2mm

1930401-Z

Collet W20 dia. 2.5mm

1930402-Z

Collet W20 dia. 3mm

1930403-Z

Collet W20 dia. 3.5mm

1930404-Z

Collet W20 dia. 4mm

1930405-Z

Collet W20 dia. 4.5mm

1930406-Z

Collet W20 dia. 5mm

1930407-Z

Collet W20 dia. 5.5mm

1930408-Z
Collet W20 dia. 6mm

1930409-Z
Collet W20 dia. 6.5mm

1930410-Z
Collet W20 dia. 7mm

1930411-Z
Collet W20 dia. 7.5mm

1930412-Z
Collet W20 dia. 8mm

1930413-Z
Collet W20 dia. 8.5mm

1930414-Z
Collet W20 dia. 9mm

1930415-Z
Collet W20 dia. 9.5mm

1930416-Z
Collet W20 dia. 10mm

1930417-Z
Collet W20 dia. 10.5mm

1930418-Z
Collet W20 dia. 11mm

1930419-Z
Collet W20 dia. 11.5mm

1930420-Z
Collet W20 dia. 12mm

1930421-Z
Collet W20 dia. 12.5mm

1930422-Z
Collet W20 dia. 13mm

1930423-Z
Collet W20 dia. 13.5mm

1930424-Z
Collet W20 dia. 14mm

1930425-Z
Collet W20 dia. 14.5mm

1930426-Z
Collet W20 dia. 15mm

1930427-Z
Collet W20 dia. 15.5mm

1930428-Z
Collet W20 dia. 16mm

1930429-Z
Collet W20 dia. 16.5mm

1930430-Z
Collet W20 dia. 17mm

1930431-Z
Collet W20 dia. 17.5mm

1930432-Z
Collet W20 dia. 18mm

1930433-Z
Collet W20 dia. 18.5mm

1930434-Z
Collet W20 dia. 19mm

1930435-Z
Collet W20 dia. 19.5mm

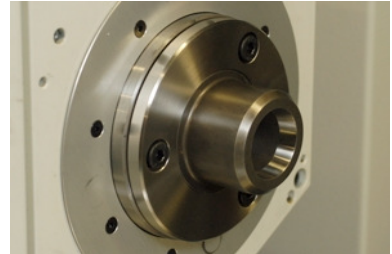
1930436-Z
Collet W20 dia. 20mm

Collets W25

2439724-Z

Adaptor for collets W25 for fitting taper ISO50

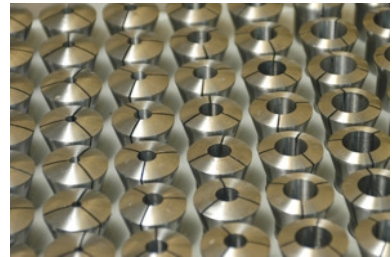
Note: Requires manual draw-bar or clamping cylinder with clamping actuating tube



5558201-Z

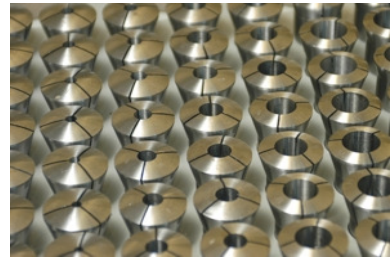
Set of 47 collets W25 dia. 2-25mm, in steps of 0.5mm

Single collets orders possible



5558300-Z

Set of 59 collets W25 dia. 3/32-1", in steps of 1/64"



1930542-Z

Collet W25 dia. 0.5mm



1930543-Z

Collet W25 dia. 1mm

1930544-Z

Collet W25 dia. 1.5mm

1930437-Z

Collet W25 dia. 2mm

1930438-Z
Collet W25 dia. 2.5mm

1930439-Z
Collet W25 dia. 3mm

1930440-Z
Collet W25 dia. 3.5mm

1930441-Z
Collet W25 dia. 4mm

1930442-Z
Collet W25 dia. 4.5mm

1930443-Z
Collet W25 dia. 5mm

1930444-Z
Collet W25 dia. 5.5mm

1930445-Z
Collet W25 dia. 6mm

1930446-Z
Collet W25 dia. 6.5mm

1930447-Z
Collet W25 dia. 7mm

1930448-Z
Collet W25 dia. 7.5mm

1930449-Z
Collet W25 dia. 8mm

1930450-Z
Collet W25 dia. 8.5mm

1930451-Z
Collet W25 dia. 9mm

1930452-Z
Collet W25 dia. 9.5mm

1930453-Z
Collet W25 dia. 10mm

1930454-Z
Collet W25 dia. 10.5mm

1930455-Z
Collet W25 dia. 11mm

1930456-Z
Collet W25 dia. 11.5mm

1930457-Z
Collet W25 dia. 12mm

1930458-Z
Collet W25 dia. 12.5mm

1930459-Z
Collet W25 dia. 13mm

1930460-Z
Collet W25 dia. 13.5mm

1930461-Z
Collet W25 dia. 14mm

1930462-Z
Collet W25 dia. 14.5mm

1930463-Z
Collet W25 dia. 15mm

1930464-Z
Collet W25 dia 15.5mm 0.61"

1930465-Z
Collet W25 dia. 16mm

1930466-Z
Collet W25 dia. 16.5mm

1930467-Z
Collet W25 dia. 17mm

1930468-Z
Collet W25 dia. 17.5mm

1930469-Z
Collet W25 dia. 18mm

1930470-Z
Collet W25 dia. 18.5mm

1930471-Z
Collet W25 dia. 19mm

1930472-Z
Collet W25 dia. 19.5mm

1930473-Z
Collet W25 dia. 20mm

1930474-Z
Collet W25 dia. 20.5mm

1930475-Z
Collet W25 dia. 21mm

1930476-Z
Collet W25 dia. 21.5mm

1930477-Z
Collet W25 dia. 22mm

1930478-Z
Collet W25 dia. 22.5mm

1930479-Z
Collet W25 dia. 23mm

1930480-Z
Collet W25 dia. 23.5mm

1930481-Z
Collet W25 dia. 24mm

1930482-Z
Collet W25 dia. 24.5mm

1930483-Z
Collet W25 dia. 25mm

Collets B32

2439725-Z

Adaptor for collets B32 for fitting taper ISO50

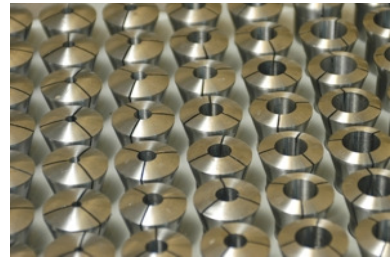


Note: Requires manual draw-bar or clamping cylinder with clamping actuating tube

2439644-Z

Set of 55 collets B32 dia. 3-30mm, in steps of 0.5mm

Single collets orders possible



1930484-Z

Collet B32 dia. 3mm



1930485-Z

Collet B32 dia. 3.5mm

1930486-Z

Collet B32 dia. 4mm

1930487-Z

Collet B32 dia. 4.5mm

1930488-Z

Collet B32 dia. 5mm

1930489-Z

collet B32 dia. 5.5mm

1930490-Z
Collet B32 dia. 6mm

1930491-Z
Collet B32 dia. 6.5mm

1930492-Z
Collet B32 dia. 7mm

1930493-Z
Collet B32 dia. 7.5mm

1930494-Z
Collet B32 dia. 8mm

1930495-Z
Collet B32 dia. 8.5mm

1930496-Z
Collet B32 dia. 9mm

1930497-Z
Collet B32 dia. 9.5mm

1930498-Z
Collet B32 dia. 10mm

1930499-Z
Colltet B32 dia. 10.5mm

1930500-Z
Collet B32 dia. 11mm

1930501-Z
Collet B32 dia. 11.5mm

1930502-Z
Collet B32 dia. 12mm

1930503-Z
Collet B32 dia. 12.5mm

1930504-Z
Collet B32 dia. 13mm

1930505-Z
Collet B32 dia. 13.5mm

1930506-Z
Collet B32 dia. 14mm

1930507-Z
Collet B32 dia. 14.5mm

1930508-Z
Collet B32 dia. 15mm

1930509-Z
Collet B32 dia. 15.5mm

1930510-Z
Collet B32 dia. 16mm

1930511-Z
Collet B32 dia. 16.5mm

1930512-Z
Collet B32 dia. 17mm

1930513-Z
Collet B32 dia. 17.5mm

1930514-Z
Collet B32 dia. 18mm

1930515-Z
Collet B32 dia. 18.5mm

1930516-Z
Collet B32 dia. 19mm

1930517-Z
Collet B32 dia. 19.5mm

1930518-Z
Collet B32 dia. 20mm

1930519-Z
Collet B32 dia. 20.5mm

1930520-Z
Collet B32 dia. 21mm

1930521-Z
Collet B32 dia. 21.5mm

1930522-Z
Collet B32 dia. 22mm

1930523-Z
Collet B32 dia. 22.5mm

1930524-Z
Collet B32 dia. 23mm

1930525-Z
Collet B32 dia. 23.5mm

1930526-Z
Collet B32 dia. 24mm

1930527-Z
Collet B32 dia. 24.5mm

1930528-Z
Collet B32 dia. 25mm

1930529-Z
Collet B32 dia. 25.5mm

1930530-Z
Collet B32 dia. 26mm

1930531-Z
Collet B32 dia. 26.5mm

1930532-Z
Collet B32 dia. 27mm

1930533-Z
Collet B32 dia. 27.5mm

1930534-Z
Collet B32 dia. 28mm

1930535-Z
Collet B32 dia. 28.5mm

1930536-Z
Collet B32 dia. 29mm

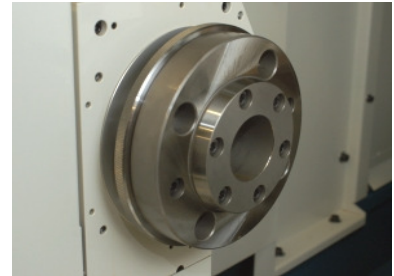
1930537-Z
Collet B32 dia. 29.5mm

1930538-Z
Collet B32 dia. 30mm

Adaptor for chucks

2439678-Z
Camlock head size 6, DIN 55029
for spindle nose dia. 110mm / 4.33" with interface
for mounting of cut-in ring sensor. Enables quick
and simple change of clamping devices for live
spindle grinding
from series 43

2439721-Z
Bayonet head size 6, DIN 55027, 55022 for fitting
taper ISO50. Enable fast and easy changeover from
live chucks. Feeding through clamp actuating tube
for use of power chucks possible.
Note: Must be dismantled when using centers



2439679-Z
Intermediate flange for bayonet head or
combination bayonet head with interface
for mounting of a cut-in ring sensor
from series 43

Adaptor for chuck (blank)

2439743-Z
Flange blank dia. 160mm / 6.30"
for bayonet head size 6, DIN 55027, 55022
for mounting of customer clamping devices
or as face plate (face side unworked).
Material cast iron GC25

2439744-Z
Flange blank dia. 200mm / 7.87"
for bayonet head size 6, DIN 55027, 55022
for mounting of customer clamping devices
or as face plate (face side unworked).
Material cast iron GC25

2439745-Z

Flange blank dia. 250mm / 9.84"
for bayonet head size 6, DIN 55027, 55022
for mounting of customer clamping devices
or as face plate (face side unworked).
Material cast iron GC25

2439680-Z

Flange blank dia. 185mm / 7.28"
for spindle nose dia. 110mm / 4.33" (with interface
for cut-in ring sensor). Clamping device interface
is unworked, suitable for holding a chuck up to dia.

Notes:

- Finishing must be carried out for each clamping device through a CO
- Only chucks fastened from the front with screws can be used as clamping devices

Three-jaw chuck (manually operated)

2439737-Z

Three-jaw manual chuck dia. 160mm / 6.3"
for bayonet head size 6, DIN 55027, 55022,
radial precision centering.
Clamping range: outside dia. 3-160mm / .12-6.3",
inside dia. 42-154mm / 1.65-6".
Repeating accuracy approx. 0.02mm / .000,79".
Incl. hard jaws (1 set for outside and 1 set for
inside chucking), chuck key and adjusting key.
Laying of a coolant tube for internal grinding
process cooling is possible

2439738-Z

Three-jaw manual chuck dia. 200mm / 7.87"
for bayonet head size 6, DIN 55027, 55022,
radial precision centering.
Clamping range: outside dia. 4-200mm / .16-7.87",
inside dia. 52-202mm / 2.05-7.95".
Repeating accuracy approx. 0.02mm / .000,79".
Incl. hard jaws (1 set for outside and 1 set for
inside chucking), chuck key and adjusting key.
Laying of a coolant tube for internal grinding
process cooling is possible

2627653-Z

Three jaw manual chuck dia. 125mm / 4.92"
for Camlock head size 6, DIN 55029,, wedge type.
Clamping range: Outside dia. 3-126mm / .12-4.96",
inside dia. 27-128mm / 1.06-5.04", jaw stroke 4.8mm
/ .19", repeating accuracy <0.02mm / .000,79".
Incl. 1 set of standard jaws, 1 set of soft jaws
and chuck key for chuck actuation.
Laying of a coolant tube for internal grinding
process cooling is possible

2909264-Z

Soft top jaws for three jaw manual chuck dia. 125mm
/ 4.92" wedge type (L = 55mm / 2.17", W = 20mm /
.79",
H = 27.5mm / 1.08")

2439695-Z

Soft top jaws for three jaw manual chuck dia. 125mm
/ 4.92" wedge type (L = 54mm / 2.12", W = 20mm
/ 0.78", H = 27.5mm / 1.08")

2627655-Z

Three jaw manual chuck dia. 160mm / 6.3"
for Camlock head size 6, DIN 55029,, wedge type.
Clamping range: Outside dia. 5-162mm / .20-6.37",
inside dia. 65-179mm / 2.56-7.04", jaw stroke 6.3mm
/ .25", repeating accuracy <0.02mm / .000,79".
Incl. 1 set of standard jaws, 1 set of soft jaws
and chuck key for chuck actuation.
Laying of a coolant tube for internal grinding
process cooling is possible

2909265-Z

Soft top jaws for three jaw manual chuck
dia. 160mm / 6.3" wedge type (L = 85mm /3.35",
W = 20mm / 0.79", H = 35.5mm / 1.39")

2439699-Z

Soft top jaws for three jaw manual chuck
dia. 160mm / 6.3" wedge type (L = 105mm / 4.13",
W = 20mm / 0.78", H = 35.5mm / 1.39")

2627656-Z

Three jaw manual chuck dia. 200mm / 7.87"
for Camlock head size 6, DIN 55029,, wedge type.
Clamping range: Outside dia. 7-192mm / .27-7.56",
inside dia. 70-221mm / 2.76-8.7", jaw stroke 6.8mm
/ .27", repeating accuracy <0.02mm / .000,79".
Incl. 1 set of standard jaws, 1 set of soft jaws
and chuck key for chuck actuation.
Laying of a coolant tube for internal grinding
process cooling is possible

2439765-Z

Soft top jaws for three jaw manual chuck dia. 200mm
/ 7.87" wedge type (L = 105mm / 4.13", W = 22mm /
0.87",
H = 42mm / 1.65")

2439764-Z

Soft top jaws for three jaw manual chuck dia. 200mm
/ 7.87" wedge type (L = 125mm / 4.92", W = 22mm
/ 0.87", H = 42mm / 1.65")

Four-jaw manually operated chuck (spiral chuck)

2439739-Z

Four-jaw precision manual chuck dia. 160mm / 6.3"
for bayonet head size 6, DIN 55027, 55022.
Clamping range: outside dia. 3-160mm / .12-6.3",
inside dia. 42-160mm / 1.65-6.3".
Incl. hard jaws (1 set for outside and 1 set for
inside chucking), chuck key and adjusting key.
The jaws are individually adjustable.
Laying of a coolant tube for internal grinding
process cooling is possible

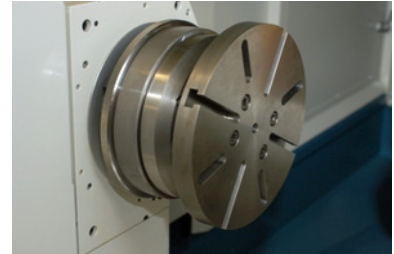
Face plate

2627659-Z

Face plate dia. 180mm / 7.09" for Camolock head
size 6, DIN 55029 with 4 T-slots and slit-holes
to clamp workpieces or clamping tools

2439735-Z

Face plate dia. 195mm / 7.68"
for bayonet head size 6, DIN 55027, 55022.
Plate with 4 T-slots and slit-holes to
clamp workpieces or clamping tools



2439736-Z

Face plate dia. 240mm / 9.45"
for bayonet head size 6, DIN 55027, 55022.
Plate without T-slots and slit-holes

Magnetic chuck

2439740-Z

Magnetic chuck dia. 120mm / 4.27"
for bayonet head size 6, DIN 55027, 55022
(permement magnet)
from series 26

2439741-Z

Magnetic chuck dia. 165mm /6.50"
for bayonet head size 6, DIN 55027, 55022,
(permement magnet)
from series 26

2627660-Z

Magnetic chuck dia. 165mm /6.50"
for Camolock head size 6, DIN 55029

2439742-Z

Magnetic chuck dia. 230mm / 9.06"
for bayonet head size 6, DIN 55027, 55022
(permement magnet)
from series 26



Power chuck

2439685-Z

3 jaw power chuck dia. 200mm / 7.87"
for bayonet head siz 6, DIN 55027, 55022, radial
fine-centering device.

Clamping range: outside dia. 26-231mm / 1.02-9.1",
inside dia. 74-270mm / 2.91-10.63".

Jaw stroke 5.3mm / .20". Repeating accuracy <0.02mm
/ .000,79". Jaw holding fixture, serrated 1/16"x90 deg.

Incl. 1 set of one-piece hard reversing jaws for
outside and inside chucking. Laying of a coolant
tube for internal grinding process cooling is possible.

Note: Clamping cylinder and clamping actuating tube
necessary

from series 43

2439749-Z

Soft top jaws for power chuck dia. 200mm / 7.87"
(L=80mm / 3.15", W=40mm / 1.57", H=40mm /
1.57").

Note: For jaws with a prescribed diameter, it
is necessary to order a jaw machining per dia.
by a design order

2439755-Z

Chuck simulator for power chuck dia. 200mm / 7.87"
for precise pre-machining of top jaws

2439686-Z

3 jaw precision power chuck dia. 200mm / 7.87"
for bayonet head size 6, DIN 55027, 55022, radial
fine centering. Jaw holding fixture with ball
positioning for precision jaw changing. Jaw stroke
2.5 mm / .10".

Repeating accuracy <0.002 mm / .000,079".

Incl. 1 set of soft reversing jaws. Correspondent top
jaws for each clamping diameter required. Laying of
a coolant tube for internal grinding process cooling
is possible.

Notes:

-- Clamping cylinder and clamping actuating tube
necessary

-- For jaws with a prescribed diameter, it is neces-
sary to order a jaw machining by a design order

from series 43

2439751-Z

Soft top jaws for precision power chuck
dia. 200mm / 7.87" (L=90mm / 3.54", W=26mm /
1.02",
H=40mm / 1.57").

Notes:

- 1 set per clamping diameter required
- For jaws with a prescribed diameter, it is necessary to order a jaw machining for each dia. by a design order indicating the desired diameter

2439752-Z

Chuck simulator for precision power chuck dia. 200mm / 7.87" for precise pre-machining of top jaws

2439753-Z

Pretension discs for outside chucking for precision power chuck dia. 200mm / 7.87". For precise grinding of the clamping diameter on the jaws. Pretension disc can be removed without removal of the jaws. Set consists of 17 discs, graduation 0.25mm / .010"

2439754-Z

Pretension ring for inside chucking for precision power chuck dia. 200mm / 7.87". For precise grinding of the clamping diameter on the jaws. The ring can be clamped in 4 different positions with a pretension diameter difference of 0.5mm/.02" for each. By means of 3 cyl. pins dia. 5mm / .20" or 6mm / .24" it is possible to cover the whole clamping range (supplied without cyl. pins)

2909656-ZK

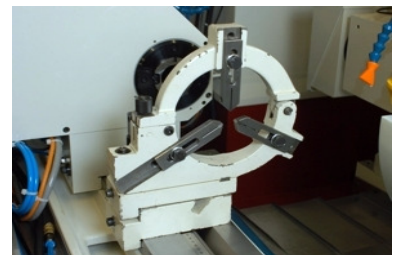
Working of soft jaws for chuck, dia.: ...mm

Note: 1 x for diameter necessary

Steady

2414611-Z

Three-jaw steady for dia. 5-140mm / .2-5.51",
(for centre height 175mm / 6.89") with fine adjustment



2621750-Z

Distance plate 50mm / 1.97", length 280mm / 11"
(for three-jaw steady 2414.611)

Note: Dial gauging radial see chapter "various"

Dressing attachment (non controled)

2615650-Z

Fixed dressing device, attachable to the machine bed,
incl. 1 set dressing tool holder, consisting of:

1 pc. dressing tool holder height adjustable with
2 connecting bores MT1 shortened, for 2 dressing
tools.

1 pc. dressing tool holder height adjustable with
holding fixture for PCD dressing plates.

1 pc. dressing tool holder height adjustable with
2 M6-Screws for 2 flues 10mm / .39" width.

Note: Not possible if machine is equipped with
dressing device with 2 swivel arms

Dressing turbine

2615662-Z

Dressing spindle 30000min-1 for dressing of internal
grinding wheels on live spindle grinding.

Power supply 0.32kW. Spindle dia. 50mm/1.97" with
collet holding fixture type D14, incl. collet
dia. 4mm/.16". Connection cable length 4m with radial
cable connection on the spindle and Harting plug HAN
6 E with straight cable output. (Spindle according
to electrical specification 1330353A).

Conditions:

- Requires spindle holder dia. 50mm/1.97"
- Requires dressing frequency converter
- Dressing tool has to be ordered separately
from series 38 until series 51

2915668-Z

Dressing spindle 30000min-1 for dressing of internal grinding wheels on live spindle grinding.
Power supply 0.32kW. Spindle dia. 50mm / 1.97" with collet holding fixture type D14, incl. collet dia. 4mm / .16". Connection cable length 2m with radial cable connection on the spindle and Harting plug HAN-Modul with straight cable output . (Spindle according to electrical specification 1330366A).

Conditions:

- Requires spindle holder dia. 50mm / 1.97"
- Requires dressing frequency converter
- Dressing tool has to be ordered separately from series 52

Spindle holder

2615661-Z

Spindle holder for mounting of a dressing spindle dia. 50mm / 1.97" on the machine base.

Note: Not possible if machine is equipped with dressing device with 2 swivel arms
from series 38

2615659-Z

Spindle holder for mounting of a dressing spindle dia. 50mm / 1.97" on the swivel arm of a dressing device. Arrangement of the spindle: Horizontal, 5° to the left for dressing of the diameter and the left grinding face of the wheel with the same dressing cup wheel edge

from series 38

2615660-Z

Spindle holder for mounting of a dressing spindle dia. 50mm / 1.97" on the swivel arm of a dressing device. Arrangement of the spindle: Horizontal, 5° to the right for dressing of the diameter and the right grinding face of the wheel with the same dressing cup wheel edge

from series 38

M-sensor for dressing spindle

2615624-Z

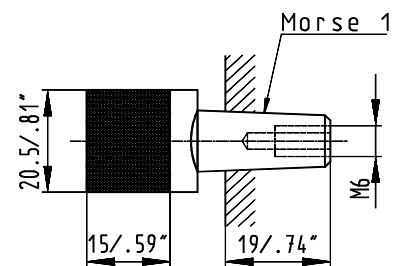
M-sensor for dressing spindle dia. 72 mm / 2.83"
for cut-in detection on rotating dressing.

Incl. sensor holder for mounting on the spindle
holder and plugable connection cable (length 4 m)

Dressing tools with fitting taper MT1 shortened

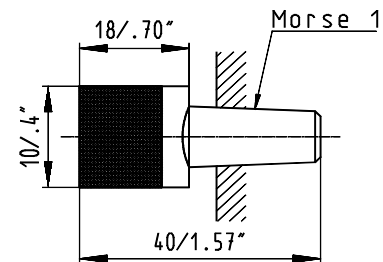
2813076-Z

Grain fliese diamond 1.15 mm/.045" with fitting
taper MT1 shortened



5560732-Z

Needle fliese type DV/10 NX, height 10mm / .39",
length 18mm / .71" with fitting taper MT1 shortened



5560731-Z

Needle fliese type DV/20 NX, height 20mm / .79",
length 20mm / .79" with fitting taper MT1 shortened

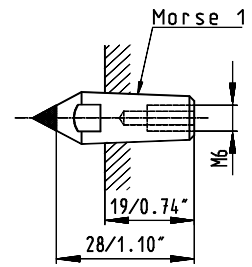
5560511-Z

Needle fliese type MKD-3-0640 DV/10, height 10mm /
.39",
length 18mm / .71" with fitting taper MT1 shortened

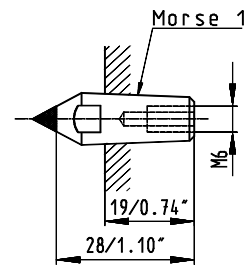
5560512-Z

Needle fliese type CVD-3-0640 DV/10, height 10mm /
.39",
length 18mm / .71" with fitting taper MT1 shortened

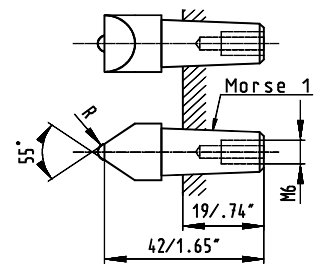
2813077-Z
Single point diamond 0.1 carat,
with fitting taper MT1 shortened



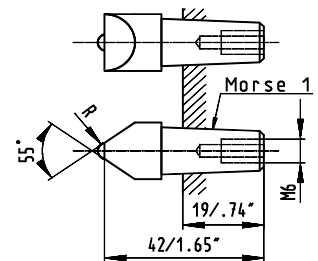
2813079-Z
Single point diamond 1.5 carat,
with fitting taper MT1 shortened



5560304-Z
Single point diamond 0.45 carat 55 deg.
R 0.25mm / .01" with fitting taper MT1 shortened

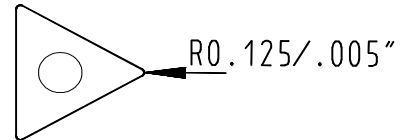


5560305-Z
Single point diamond 0.45 carat 55 deg.
R 0.5mm / .02" with fitting taper MT1 shortened

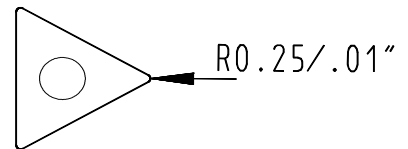


PCD-dressing plate with sep. fitting taper

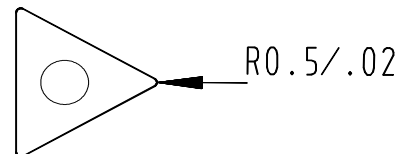
5560721-Z
PCD-dressing plate R 0.125mm/.005"
Note: Requires correspondent adaptor for
PCD-dressing plates



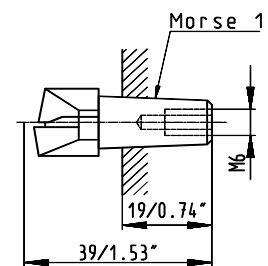
5560722-Z
PCD-dressing plate R 0.25mm/.01"
Note: Requires correspondent adaptor for
PCD-dressing plates



5560723-Z
PCD-dressing plate R 0.5mm/.02"
Note: Requires correspondent adaptor for
PCD-dressing plates



5560727-Z
Adaptor for PCD-dressing plates (self-centering)



dressing motor spindle dia. 50mm / 1.97"

5560504-Z
Diamond tipped cupwheel dia. 15x13mm / 0.59x0.51",
shaft dia. 4mm / 0.16"

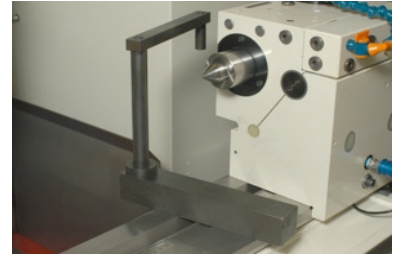
5560509-Z

Diamond tipped cupwheel (10 deg. tapered)
dia. 16x15mm / 0.63x0.59", shaft dia. 4mm / 0.16"

Auxiliary attachment for the adjustment of the dressing tool height

2621605-Z

Auxiliary attachment to adjust stationary dressing
tools to 175mm/6.89" center height



Footpedal

2404753-Z

Approval pedal to carry out movements with open
operating doors (with switch-off above the stroke).
Facilitates workpiece alignment in the chucks.
Connection cable length 3.5m

from series 43



2404754-Z

Footpedal for clamping devices for electrically
controlled clamping devices (hydraulic tailstock
retraction, chucks etc.) Double foot pedal
(clamping/unclamping) with over-travel switch on
the clamping pedal. Connection cable length 3.5m

from series 43

First cut recognition

1332636-Z

Sensitron pick-up with magnetic base
incl. connection cable (length 3m).

Note: Not for use with Sensitron 2
until series 42



2404774-Z

First cut sensor with magnetic base and connection cable, length 4m
from series 43



Interface card for external PC

1397056-Z

High-Speed serial bus plug-in card Fanuc 16TB for personal computer. Enables communication between PC and CNC-machine control Fanuc 16TB via optical fiber transmission cable of the machine and High-Speed serial bus on machine side.

PC system requirements:

IBM-compatible computer with Windows95 or WindowsNT;

Pentium processor, 16MB RAM, VGA-screen, mouse.

Free slot for a ISA extension card (16Bit).

Includes:

-- ISA extension card HSSB

-- Installation instructions German / English / French / Italian

from series 42

1397101-Z

High-Speed serial bus PCI plug-in card Fanuc for personal computers. Enables communication between PC and Fanuc CNC control via optical fiber transmission cable of the machine and High-Speed serial bus on machine side.

PC system requirements:

IBM-compatible computer with Windows95 or WindowsNT;

Pentium processor, 16MB RAM, VGA-screen, mouse.

Free slot for a PCI extension card (16bit)

Items included: PCI extension card HSSB

from series 43

Input and output units

2404657-Z

External disk unit 3 1/2" (Fanuc Handy File) incl.
7m cable. MS-DOS-compatible



2219605-Z

Discs 3 1/2", 2HD (package with 10 pieces)



1332655-Z

Transmission cable RS 232 C for the connection
Fanuc-control <--> personal computer, length 5m.

Note: Not necessary if the machine and PC is
equipped with HSSB and optical fiber transmission cable



1389854-Z

Studer Ethernet transmission cable (Crossover) for
connecting the Fanuc control system to an external
PC, length 10m.

Note: Cannot be used as network cable

Communication software

1397019-Z

StCom for Windows 4.x software pack for transferring data and grinding programs from Fanuc control system to a PC or vice versa through the serial interface.

Dialog language German / English / French / Italian (switchable), incl. integrated operating instructions.

System requirements:

Personal computer with:

- Operating system: Microsoft Windows 95 or higher
- Pentium processor
- 16MB random access memory (RAM)
- CD-ROM and 3.5" floppy disk drive
- Free serial interface RS 232 C
- MOUSE

Studer grinding machine with:

- Fanuc control system and Studer operating system Release A or higher

Scope of supply:

- Software on CD-ROM and license key on 3.5" floppy disk
- Installation instructions German / English

Note: Requires RS 232 C data cable

1397114-Z

Macro for StuderFormHSM or StuderPunch: C1

Accessories for measuring head

2431610-Z

Breaking piece for measuring probe Marposs T25G (spare part)

2429819-Z

Measuring tip for measuring probe Marposs T25G (spare part)

Hydraulic and lubricating oil

For X-/Z-axes: Oil Shell Tonna S32

For high frequency motor spindles GMN: Oil Motorex Spindle Lube ISO VG 46

For high frequency motor spindles Fischer: Oil Motorex Spindle Lube ISO VG 68

Oil for lubrication in connection with pneumatic lifting: Mobil DTE 24

For hydraulic: Oil Mobil DTE 24

Oil Shell Tonna S32

5601806-Z

5 litre can oil Shell Tonna S32



5601807-Z

3 cans at 20 litres oil Shell Tonna S32



Oil Mobil DTE 24

5601829-Z

5 litre can oil MOBIL DTE 24



5601816-Z

2 cans of 10 litre oil MOBILE DTE 24



5601814-Z
50kg drum oil MOBIL DTE 24



Oil Motorex Spindle Lube ISO VG46

5601866-Z
Can of 4 liters oil Motorex Spindle Lube ISO VG46,
cleanliness class 13/10 according to ISO 4406

Oil Motorex Spindle Lube ISO VG 68

5601869-Z
4 litre can oil Motorex Spindle Lube ISO VG 68
cleanliness class 13/10 according ISO 4406



Filter paper

5490115-Z
Filter fleece, fine OL 50, recommended for emulsion;
roll of 150m, width 1000mm

Coolant

5601412-Z
5 litre can of coolant CASTROL Hysol R



5601420-Z
15 litres can of coolant CASTROL Hysol R



Corrosion protection agents

3118613-Z
Corrosion protection agents. 5 litres can Motorex Coolant F for motor spindles internal cooling



2918032-Z
Can with 0.15 liter fungicide Motorex Antisept for the water cooling circuit of the motor spindles



2918695-Z
Can (1 l) of cleaner for the water coolant circuit of motor spindles, Motorex Swisscare SC



Filter mat for grinding mist extraction unit

2422667-Z

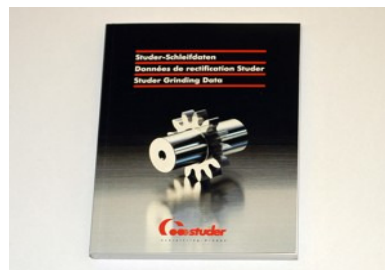
Spare filter mat (10 pces.) for grinding mist extraction unit for emulsion



Machine documentation

9904256-Z

Booklet Studer Grinding Data (pocket file)



Various

For steady: Dial gauging radial

5530018-Z

Radial dial gauge, metric (division 0.002mm)



5530118-Z

Radial dial gauge, inch (division 0.0001")



Auxiliary accessories

1848602-Z
Steel tool cabinet

