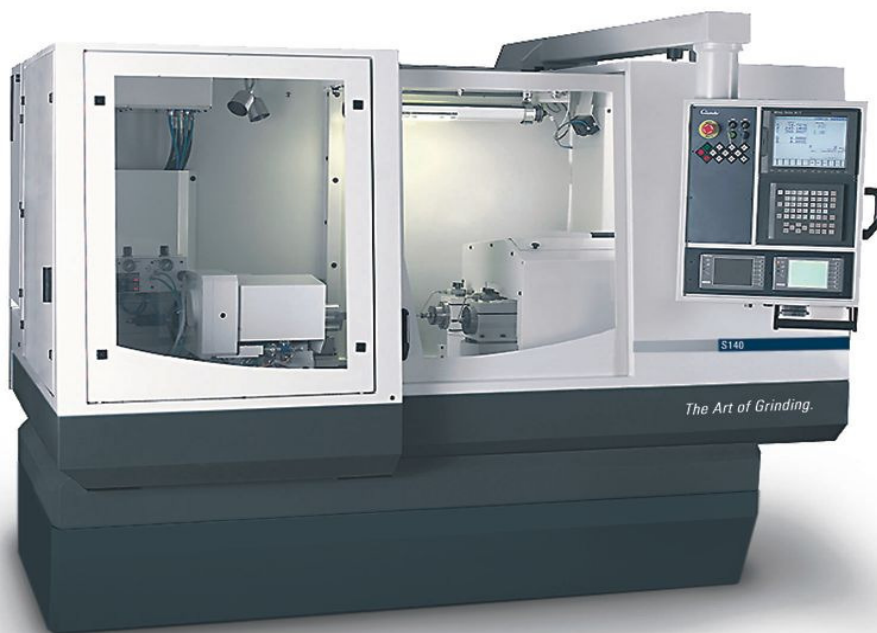


The accessories.

Production Internal Cylindrical Grinding Machine



S140 - The Productive for the highest precision.

Contents

	Page
Wheel adaptor, nominal dia. 63mm/2.48"	4
Spacer ring	4
Extraction tool	5
Wheel changing unit	5
Static balancing	5
External grinding wheels	6
Grinding wheel dia. 250mm / 9.84", bore 76.2mm / 3"	6
Internal grinding unit	7

Fritz Studer AG
CH-3602 Thun
www.studer.com
info@studer.com

Telefon +41-33-439 11 11
Telefax +41-33-439 11 12
Bank: UBS AG
CH-3001 Bern

Geschäftsführung:
Dr.-Ing. H.-Jürgen Prokop (Vors.)
Dipl.-Ing. Fred W. Gaegauf
Stephan Nell



Studer Schaudt GmbH
D-70329 Stuttgart

Dr. Ing. Ingolf Lammich

Internal grinding arbors HJND 21	9
Internal grinding arbors HJND 28	10
Internal grinding arbors HJND 50	11
Internal grinding arbors HJND 60	12
Internal grinding arbors HJND 80	13
Face grinding arbor HJNP	14
Collets ER11	15
Collets ER20	16
Collets ER25	16
Additional bolts (wheel adaptors) for internal grinding arbors	18
Wheels for internal grinding arbors	19
Weels for chucks	24
Wheels for face grinding arbor	25
Accessories for workhead	25
Collets W20	25
Adaptor for chucks	28
Adaptor for chuck (blank)	29
Three-jaw chuck (manually operated)	29
Three-jaw chuck (manually operated) wedge type	30
Four-jaw manually operated chuck (spiral chuck)	31
Face plate	32
Magnetic chuck	32
Power chuck	33
Dressing attachment (non controled)	36
Dressing tool holder for dressing attachment	36
M-sensor for dressing spindle	36
Dressing tools with fitting taper MT1 shortened	37
PCD-dressing plate with sep. fitting taper	39
Grain fliese diamonds with sep. fitting taper	40
Dressing tools with cylindrical shaft dia 9.52x35mm	41
dressing motor spindle dia. 50mm / 1.97"	42
Auxiliary attachment for the adjustment of the dressing tool height	42
Footpedal	43
First cut recognition	43

Fritz Studer AG
CH-3602 Thun
www.studer.com
info@studer.com

Telefon +41-33-439 11 11
Telefax +41-33-439 11 12
Bank: UBS AG
CH-3001 Bern

Geschäftsführung:
Dr.-Ing. H.-Jürgen Prokop (Vors.)
Dipl.-Ing. Fred W. Gaegauf
Stephan Nell



Studer Schaudt GmbH
D-70329 Stuttgart

Dr. Ing. Ingolf Lammich

Hydraulic and lubricating oil	44
Oil Shell Tonna S32	44
Grease Klüber Staburags NBU 8 EP	44
Oil Mobil DTE 24	44
Oil Motorex Spindle Lube ISO VG46	45
Oil Motorex Spindle Lube ISO VG 68	45
Filter paper	45
Coolant	46
Corrosion protection agents	46
Filter mat for grinding mist extraction unit	47
Machine documentation	47
Auxiliary accessories	48



Wheel adaptor, nominal dia. 63mm/2.48"

2667675-Z

Wheel adaptor dia. 400mm/15.75" with bore 127mm/5".

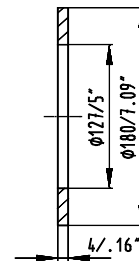
Width 25-32mm / 0.98"-1.26" form1 for tapered shaft ends 1:10 nominal dia. 63mm / 2.48".

Extractor thread M72x2mm. Incl. balancing segments and graduation

Spacer ring

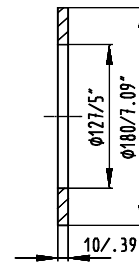
2713043-Z

Spacer ring 4mm/.16" with bore 127mm/5"



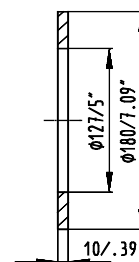
2433060-Z

Spacer ring 10mm/.39" with bore 127mm/5"



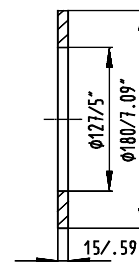
2012238-Z

Spacer ring 10mm/0.39"



2433061-Z

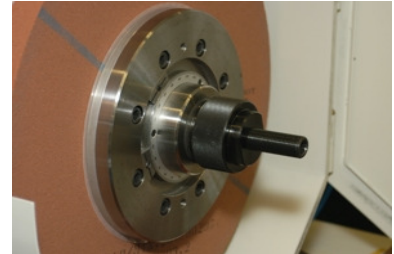
Spacer ring 15mm/.60" with bore 127mm/5"



Extraction tool

2912647-Z

Extraction tool for wheel adaptors,
for shaft end with nominal dia. 63mm / 2.48"



2912696-Z

Extraction tool for wheel adaptors,
for shaft end with nominal dia. 73mm / 2.87"

Wheel changing unit

2670614-Z

Sliding suspension attachable to the machine
and suspension bracket for grinding wheel change

Static balancing

2416600-Z

Balancing equipment dia. up to 400mm / 15.75"
for static balancing of the grinding wheel outside
of the machine.

Note: Requires the respective balancing mandrel for
grinding wheels



2912648-Z

Balancing arbor for grinding wheels
with nominal dia. 63mm / 2.48", length 285mm
/ 11.22" for balancing equipment dia. 400mm
/ 15.75" or 600mm / 23.62"



2670609-Z

Balancing arbor for grinding wheels
with nominal dia. 76.2mm / 3", length 285mm
/ 11.22" for balancing equipment dia. 400mm
/ 15.75"

External grinding wheels

General application of abrasives

11C Silicon Carbides for:

Cast iron / tungsten carbide / glass / plastics / non-ferrous
metals / ceramics / stainless, acid and heat resistant steel /
hardened steel 63 HRc and higher / nitriding steel.
hardened steel 63 HRc and higher / nitriding steel.

54A White aluminium oxide for:

Non-alloyed, alloyed, unhardened and hardened steel up to
63 HRc (carbon content up to 0.5% / stainless, acid and
heat resistant steel / nitriding steel (untreated) / cast steel
nodular cast iron / tool steel / hard-chrome plated steel.

81A Ceramic aluminium oxide:

Difficult-to-grind steel and alloys (tool steel, high speed
steel) from soft state to 64 HRc / cast steel / cast iron

The following abrasives should no longer be used:

42A, 53A, 57A Pure aluminium oxide was replaced by 54A Pure aluminium oxide

Grinding wheel dia. 250mm / 9.84", bore 76.2mm / 3"

5585230-Z

Grinding wheel dia. 250x20x76.2mm F1 /
9.84x0.79x3" form 1,
57A 80 H 8 V. Cutting speed 50m/s / 9840sfpm.

Note: No longer usable for new quotes
until series 15

5585324-Z

Grinding wheel dia. 250x20x76.2mm F1 /
9.84x0.79x3" form 1,
11C 120 H 5 V. Cutting speed 50m/s / 9840sfpm

5585334-Z

Grinding wheel dia. 250x20x76.2mm F1N /
9.84x0.79x3" form 1N,
54A 120 H 15 VPLF604W.
Cutting speed 50m/s / 9840sfpm

5585327-Z

Grinding wheel dia. 250x25x76.2mm F1 /
9.84x0.98x3" form 1,
11C 80 J 15 VPLF. Cutting speed 50m/s / 9840sfpm.

Note: No longer usable for new quotes
until series 15

5585422-Z

Grinding wheel dia. 250x25x76.2mm F1 /
9.84x0.98x3" form 1,
64A 60 H 15 VP. Cutting speed 50m/s / 9840sfpm.

Note: No longer usable for new quotes
until series 15

5585104-Z

Grinding wheel dia. 250x25x76.2mm F1N /
9.84x0.98x3" form 1N,
64A 80 H 15 VP. Cutting speed 50m/s / 9840sfpm.

Note: No longer usable for new quotes,
was replaced by selling no 5585335

5585335-Z

Grinding wheel dia. 250x25x76.2mm F1N /
9.84x0.98x3" form 1N / $v=60^\circ$ $x=3$,
81A 80 H 8 V601W.
Cutting speed 50m/s / 9840sfpm

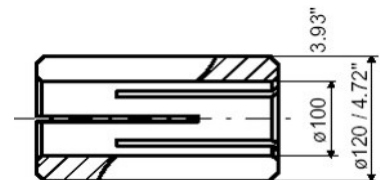
Internal grinding unit

1826033-Z

Reduction sleeve dia. 100/80mm / 3.94"/3.15".
For mounting of a spindle dia. 80mm / 3.15"
in a spindle holder dia. 100mm / 3.94"

2417110-Z

Reduction sleeve dia. 120/100mm / 4.72"/3.94".
For mounting of a spindle dia. 100mm / 3.94"
in a spindle holder dia. 120mm / 4.72"



5600032-Z

Package consisting of adhesive and hardener for mounting of internal grinding wheels on threaded bolts

HF internal grinding motor spindles with 4 lubrication connections

General notes for HF internal grinding motor spindles:

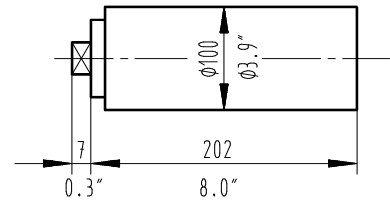
- Incl. testing and initial lubrication, if spindle is ordered together with the machine
- Reduction sleeves required depending on the diameter of the internal grinding attachment and the motor spindles

2667695-Z

Internal grinding motor spindle Fischer MFM 10120 (120'000min-1 / 3.5kW) dia. 100mm / 3.94" according to Studer specification 1330348A with tool holding fixture HJND 60.

Oil-air lubrication with 4 lubrication connections and water cooling.

Note: Machine is to be equipped with oil-air lubrication for 4 lubrication connections

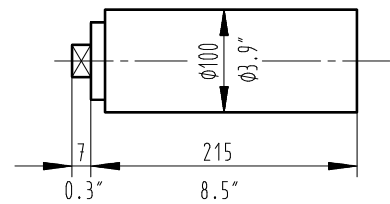


2667666-Z

Internal grinding motor spindle Fischer MFM 1090 (90'000min-1 / 4.2kW) dia. 100mm / 3.94" according to Studer specification 1330348A with tool holding fixture HJND 50.

Oil-air lubrication with 4 lubrication connections and water cooling.

Note: Machine is to be equipped with oil-air lubrication for 4 lubrication connections

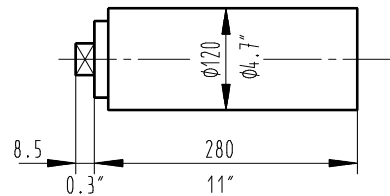


2667629-Z

Internal grinding motor spindle Fischer MFM 1242/60 (42000-60000min-1 / 10 kW), multi-range spindle dia. 120mm / 4.72" according to Studer specification 1330348A with tool holding fixture HJND 28.

Oil-air lubrication with 4 lubrication connections and water cooling.

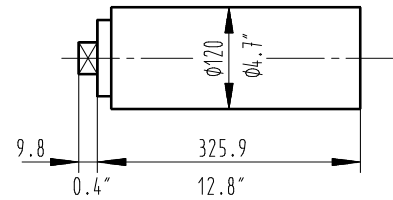
Note: Machine is to be equipped with oil-air lubrication for 4 lubrication connections



2667628-Z

Internal grinding motor spindle Fischer
MFM 1224/42 (24'000-42'000min-1 / 15 kW),
multi-range
spindle dia. 120mm / 4.72" according to Studer speci-
fication 1330348A with tool holding fixture HJND 21.
Oil-air lubrication with 4 lubrication connections
and water cooling.

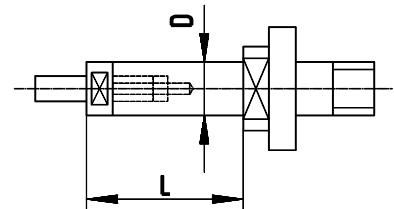
Note: Machine is to be equipped with oil-air
lubrication for 4 lubrication connections



Internal grinding arbors HJND 21

5552393-Z

Grinding arbor HJND 21-1220 dia. 12x20mm



5552394-Z

Grinding arbor HJND 21-1235 dia. 12x35mm

5552395-Z

Grinding arbor HJND 21-1250 dia. 12x50mm

5552325-Z

Grinding arbor HJND 21-1625 dia. 16x25mm

5552326-Z

Grinding arbor HJND 21-1645 dia. 16x45mm

5552327-Z

Grinding arbor HJND 21-1665 dia. 16x65mm

5552328-Z

Grinding arbor HJND 21-2030 dia. 20x30mm

5552329-Z

Grinding arbor HJND 21-2060 dia. 20x60mm

5552330-Z

Grinding arbor HJND 21-2090 dia. 20x90mm

5552331-Z

Grinding arbor HJND 21-2535 dia. 25x35mm

5552332-Z
Grinding arbor HJND 21-2575 dia. 25x75mm

5552333-Z
Grinding arbor HJND 21-25115 dia. 25x115mm

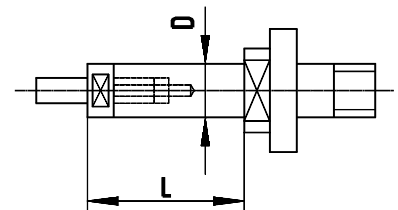
5552334-Z
Grinding arbor HJND 21-3240 dia. 32x40mm

5552335-Z
Grinding arbor HJND 21-3290 dia. 32x90mm

5552336-Z
Grinding arbor HJND 21-32140 dia. 32x140mm

Internal grinding arbors HJND 28

5552313-Z
Grinding arbor HJND 28-1220 dia. 12x20mm



5552314-Z
Grinding arbor HJND 28-1235 dia. 12x35mm

5552315-Z
Grinding arbor HJND 28-1250 dia. 12x50mm

5552316-Z
Grinding arbor HJND 28-1625 dia. 16x25mm

5552317-Z
Grinding arbor HJND 28-1645 dia. 16x45mm

5552318-Z
Grinding arbor HJND 28-1665 dia. 16x65mm

5552319-Z
Grinding arbor HJND 28-2030 dia. 20x30mm

5552320-Z
Grinding arbor HJND 28-2060 dia. 20x60mm

5552321-Z
Grinding arbor HJND 28-2090 dia. 20x90mm

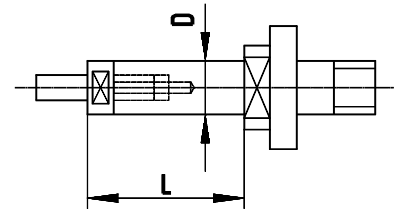
5552322-Z
Grinding arbor HJND 28-2535 dia. 25x35mm

5552323-Z
Grinding arbor HJND 28-2575 dia. 25x75mm

5552324-Z
Grinding arbor HJND 28-25115 dia. 25x115mm

Internal grinding arbors HJND 50

5552277-Z
Grinding arbor HJND 50-514 dia. 5x14mm



5552278-Z
Grinding arbor HJND 50-520 dia. 5x20mm

5552279-Z
Grinding arbor HJND 50-528 dia. 5x28mm

5552280-Z
Grinding arbor HJND 50-716 dia. 7x16mm

5552281-Z
Grinding arbor HJND 50-725 dia. 7x25mm

5552282-Z
Grinding arbor HJND 50-736 dia. 7x36mm

5552283-Z
Grinding arbor HJND 50-918 dia. 9x18mm

5552284-Z
Grinding arbor HJND 50-930 dia. 9x30mm

5552285-Z
Grinding arbor HJND 50-945 dia. 9x45mm

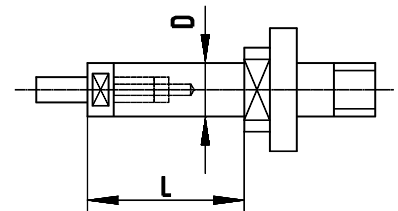
5552286-Z
Grinding arbor HJND 50-1220 dia. 12x20mm

5552287-Z
Grinding arbor HJND 50-1235 dia. 12x35mm

5552288-Z
Grinding arbor HJND 50-1250 dia. 12x50mm

Internal grinding arbors HJND 60

5552265-Z
Grinding arbor HJND 60-412 dia. 4x12mm



5552266-Z
Grinding arbor HJND 60-418 dia. 4x18mm

5552267-Z
Grinding arbor HJND 60-424 dia. 4x24mm

5552268-Z
Grinding arbor HJND 60-514 dia. 5x14mm

5552269-Z
Grinding arbor HJND 60-520 dia. 5x20mm

5552270-Z
Grinding arbor HJND 60-528 dia. 5x28mm

5552271-Z
Grinding arbor HJND 60-716 dia. 7x16mm

5552272-Z
Grinding arbor HJND 60-725 dia. 7x25mm

5552273-Z
Grinding arbor HJND 60-736 dia. 7x36mm

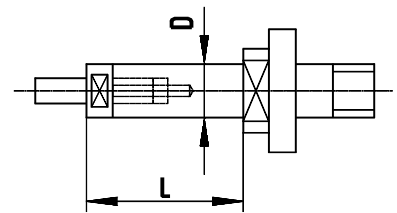
5552274-Z
Grinding arbor HJND 60-918 dia. 9x18mm

5552275-Z
Grinding arbor HJND 60-930 dia. 9x30mm

5552276-Z
Grinding arbor HJND 60-945 dia. 9x45mm

Internal grinding arbors HJND 80

5552253-Z
Grinding arbor HJND 80-308 dia. 3x8mm



5552254-Z
Grinding arbor HJND 80-312 dia. 3x12mm

5552255-Z
Grinding arbor HJND 80-317 dia. 3x17mm

5552256-Z
Grinding arbor HJND 80-3510 dia. 3.5x10mm

5552257-Z
Grinding arbor HJND 80-3515 dia. 3.5x15mm

5552258-Z
Grinding arbor HJND 80-3520 dia. 3.5x20mm

5552259-Z
Grinding arbor HJND 80-412 dia. 4x12mm

5552260-Z
Grinding arbor HJND 80-418 dia. 4x18mm

5552261-Z
Grinding arbor HJND 80-424 dia. 4x24mm

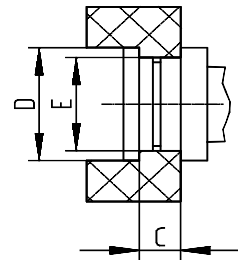
5552262-Z
Grinding arbor HJND 80-514 dia. 5x14mm

5552263-Z
Grinding arbor HJND 80-520 dia. 5x20mm

5552264-Z
Grinding arbor HJND 80-528 dia. 5x28mm

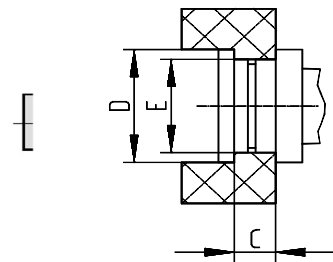
Face grinding arbor HJNP

5552221-Z
Face grinding arbor HJNP 21

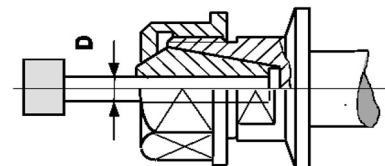


5552220-Z
Face grinding arbor HJNP 28

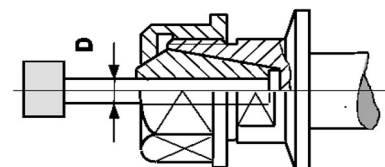
5552397-Z
Chuck HJNZ 21 +2 collets ER25 dia. 3+6mm



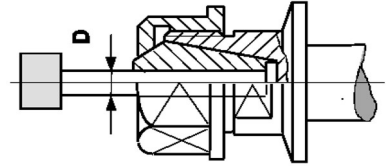
5552211-Z
Chuck HJNZ 28 +2 collets ER20 dia. 3+6mm



5552208-Z
Chuck HJNZ 50 +2 collets ER11 dia. 3+6mm

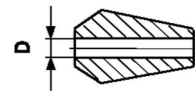


5552207-Z
Chuck HJNZ 60 +2 collets ER11 dia. 3+6mm



Collets ER11

2026510-Z
Collet ER11 dia. 1mm



2026511-Z
Collet ER11 dia. 1.5mm

2026512-Z
Collet ER11 dia. 2mm

2026513-Z
Collet ER11 dia. 2.5mm

2026514-Z
Collet ER11 dia. 3mm

2026515-Z
Collet ER11 dia. 3.5mm

2026516-Z
Collet ER11 dia. 4mm

2026517-Z
Collet ER11 dia. 4.5mm

2026518-Z
Collet ER11 dia. 5mm

2026519-Z
Collet ER11 dia. 5.5mm

2026520-Z
Collet ER11 dia. 6mm

Collets ER20

2026552-Z
Collet ER20 dia. 2mm

2026553-Z
Collet ER20 dia. 3mm

2026554-Z
Collet ER20 dia. 4mm

2026555-Z
Collet ER20 dia. 5mm

2026556-Z
Collet ER20 dia. 6mm

2026557-Z
Collet ER20 dia. 7mm

2026558-Z
Collet ER20 dia. 8mm

2026559-Z
Collet ER20 dia. 9mm

2026560-Z
Collet ER20 dia. 10mm

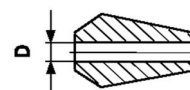
2026561-Z
Collet ER20 dia. 11mm

2026562-Z
Collet ER20 dia. 12mm

2026563-Z
Collet ER20 dia. 13mm

Collets ER25

2026564-Z
Collet ER25 dia. 2mm



2026565-Z
Collet ER25 dia. 3mm

2026566-Z
Collet ER25 dia. 4mm

2026567-Z
Collet ER25 dia. 5mm

2026568-Z
Collet ER25 dia. 6mm

2026569-Z
Collet ER25 dia. 7mm

2026570-Z
Collet ER25 dia. 8mm

2026571-Z
Collet ER25 dia. 9mm

2026572-Z
Collet ER25 dia. 10mm

2026573-Z
Collet ER25 dia. 11mm

2026574-Z
Collet ER25 dia. 12mm

2026575-Z
Collet ER25 dia. 13mm

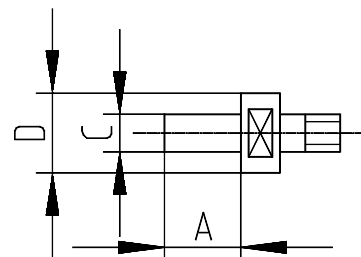
2026576-Z
Collet ER25 dia. 14mm

2026577-Z
Collet ER25 dia. 15mm

2026578-Z
Collet ER25 dia. 16mm

Additional bolts (wheel adaptors) for internal grinding arbors

5551918-Z
Set of 10 bolts dia. 3.5mm



5551944-Z
Set of 10 bolts dia. 4mm

5551939-Z
Set of 10 bolts dia. 5mm

5551921-Z
Set of 10 bolts dia. 7mm

5551922-Z
Set of 10 bolts dia. 9mm

5551940-Z
Set of 10 bolts dia. 12mm

5551924-Z
Set of 10 bolts dia. 16mm

5551941-Z
Set of 5 bolts dia. 20mm

5551942-Z
Set of 5 bolts dia. 25mm

5551943-Z
Set of 5 bolts dia. 32mm

Wheels for internal grinding arbors

General application of abrasives

11C Silicon Carbides for:

Cast iron / tungsten carbide / glass / plastics / non-ferrous metals / ceramics / stainless, acid and heat resistant steel / hardened steel 63 HRc and higher / nitriding steel.

54A Pure aluminium oxide for:

Non-alloyed, alloyed, unhardened and hardened steel up to 63 HRc (carbon content up to 0.5% / stainless, acid and heat resistant steel / nitriding steel (untreated) / cast steel nodular cast iron / tool steel / hard-chrome plated steel.

93A Ceramic aluminium oxide (30%) for:

Difficult-to-grind steel and alloys (tool steel, high speed steel) from soft state to 64 HRc / cast steel / cast iron

The following abrasives should no longer be used:

42A Pure aluminium oxide was replaced by 54A Pure aluminium oxide

64A Pure aluminium oxide was replaced by 93A Ceramic aluminium oxide

5583119-Z

Set of 10 wheels dia. 6x6x2.5mm 11C 80 G 6 V

Cutting speed 50m/s / 9840sfpm

5583041-Z

Set of 10 wheels dia. 6x6x2.5mm 54A 80 H 8 V604W

Cutting speed 50m/s / 9840sfpm

5583042-Z

Set of 10 wheels dia. Ø 6x6x2.5mm 93A 120 H 13

VP601

Cutting speed 50m/s / 9840sfpm

5583018-Z

Set of 10 wheels dia. 6x6x2.5mm 42A 80 H 8 V

Cutting speed 50m/s / 9840sfpm.

Note: No longer usable for new quotes,
was replaced by selling no 5583041

5583068-Z

Set of 10 wheels dia. 6x6x2.5mm 64A 80 H 8 V

Cutting speed 50m/s / 9840sfpm.

Note: No longer usable for new quotes,
was replaced by selling no 5583042

5583009-Z

Set of 10 Ø 8x8x2.5mm 42A 80 H 8 V

Cutting speed 50m/s / 9840sfpm.

Note: No longer usable for new quotes,
was replaced by selling no 5583043

5583059-Z

Set of 10 wheels Ø 8x8x2.5mm 64A 80 H 8 V

Cutting speed 50m/s / 9840sfpm.

Note: No longer usable for new quotes,
was replaced by selling no 5583044

5583110-Z

Set of 10 wheels dia. 8x8x2.5mm 11C 80 G 6 V

Cutting speed 50m/s / 9840sfpm

5583043-Z

Set of 10 wheels dia. 8x8x2.5mm 54A 80 H 8 V604W

Cutting speed 50m/s / 9840sfpm

5583044-Z

Set of 10 wheels dia. 8x8x2.5mm 93A 120 H 13 VP601

Cutting speed 50m/s / 9840sfpm

5583019-Z

Set of 10 wheels dia. 10x10x4mm 42A 80 H 8 V

Cutting speed 50m/s / 9840sfpm.

Note: No longer usable for new quotes,
was replaced by selling no 5583045

until series 15

5583069-Z

Set of 10 wheels dia. 10x10x4mm 64A 80 H 8 V

Cutting speed 50m/s / 9840sfpm.

Note: No longer usable for new quotes,
was replaced by selling no 5583046

5583120-Z

Set of 10 wheels dia. 10x10x4mm 11C 80 G 6 V

Cutting speed 50ms/s / 9840sfpm

5583045-Z

Set of 10 wheels dia. 10x10x4mm 54A 80 H 8 V604W

Cutting speed 50m/s / 9840sfpm

5583046-Z

Set of 10 wheels dia. 10x10x4mm 93A 120 H 13
VP601

Cutting speed 50m/s / 9840sfpm

5583011-Z

Set of 10 wheels dia. 13x13x4mm 42A 60 H 8 V
Cutting speed 50m/s / 9840sfpm.

Note: No longer usable for new quotes,
was replaced by selling no 5583047

5583061-Z

Set of 10 wheels dia. 13x13x4mm 64A 60 H 8 V
cutting speed 50m/s / 9840sfpm.

Note: No longer usable for new quotes,
was replaced by selling no 5583048

5583112-Z

Set of 10 wheels dia. 13x13x4mm 11C 60 H 15 VP
Cutting speed 50m/s / 9840sfpm

5583047-Z

Set of 10 wheels dia. 13x13x4mm 54A 80 H 8 V604W
Cutting speed 50m/s / 9840sfpm

5583048-Z

Set of 10 wheels dia. 13x13x4mm 93A 120 H 13
VP601

Cutting speed 50m/s / 9840sfpm

5583020-Z

Set of 10 wheels dia. 16x16x6mm 42A 60 H 8 V
Cutting speed 50m/s / 9840sfpm.

Note: No longer usable for new quotes,
was replaced by selling no 5583049

5583070-Z

Set of 10 wheels dia. 16x16x6mm 64A 60 H 8 V
Cutting speed 50m/s / 9840sfpm.

Note: No longer usable for new quotes,
was replaced by selling no 5583076

5583121-Z

Set of 10 wheels dia. 16x16x6mm 11C 60 H 15 VP
Cutting speed 50m/s

5583049-Z

Set of 10 wheels dia. 16x16x6mm 54A 80 H 8 V604W
Cutting speed 50m/s / 9840sfpm

5583076-Z

Set of 10 wheels dia. 16x16x6mm 93A 120 H 13
VP601
Cutting speed 50m/s / 9840sfpm

5583021-Z

Set of 10 wheels dia. 20x20x6mm 42A 60 H 8 V
cutting speed 50m/s / 9840sfpm.

Note: No longer usable for new quotes,
was replaced by selling no 5583077

5583071-Z

Set of 10 wheels dia. 20x20x6mm 64A 60 H 8 V
Cutting speed 50m/s / 9840sfpm.

Note: No longer usable for new quotes,
was replaced by selling no 5583078

5583122-Z

Set of 10 wheels Ø 20x20x6mm 11C 60 H 15 VP
Cutting speed 50m/s / 9840sfpm

5583077-Z

Set of 10 wheels dia. 20x20x6mm 54A 80 H 8 V604W
Cutting speed 50m/s / 9840sfpm

5583078-Z

Set of 10 wheels dia. 20x20x6mm 93A 120 H 13
VP601
Cutting speed 50m/s / 9840sfpm

5583022-Z

Set of 10 wheels dia. 25x25x10mm 42A 60 H 8 V
Cutting speed 50m/s / 9840sfpm.

Note: No longer usable for new quotes,
was replaced by selling no 5583079

5583072-Z

Set of 10 wheels dia. 25x25x10mm 64A 60 H 8 V
Cutting speed 50m/s / 9840sfpm.

Note: No longer usable for new quotes,
was replaced by selling no 5583080

5583123-Z

Set of 10 wheels dia. 25x25x10mm 11C 60 H 15 VP
Cutting speed 50m/s / 9840sfpm

5583079-Z

Set of 10 wheels dia. 25x25x10mm 54A 80 H 8 V604W
Cutting speed 50m/ s / 9840sfpm

5583080-Z

Set of 10 wheels dia. 25x25x10mm 93A 120 H 13
VP601
Cutting speed 50m/s / 9840sfpm

5583023-Z

Set of 5 wheels dia. 32x32x10mm 42A 60 H 8 V
Cutting speed 50m/s / 9840sfpm.

Note: No longer usable for new quotes,
was replaced by selling no 5583081

5583073-Z

Set of 5 wheels dia. 32x32x10mm 64A 60 H 8 V
Cutting speed 50m/s / 9840sfpm.

Note: No longer usable for new quotes,
was replaced by selling no 5583082

5583124-Z

Set of 5 wheels dia. 32x32x10mm 11C 60 H 15 VP
Cutting speed 50m/s / 9840sfpm

5583081-Z

Set of 5 wheels dia. 32x32x10mm 54A 80 H 8 V604W
Cutting speed 50m/s / 9840sfpm

5583082-Z

Set of 5 wheels Ø 32x32x10mm 93A 120 H 13 VP601
Cutting speed 50m/s / 9840sfpm

5583024-Z

Set of 5 wheels dia. 40x40x13mm 42A 60 H 8 V
Cutting speed 50m/s / 9840sfpm.

Note: No longer usable for new quotes,
was replaced by selling no 5583083

5583074-Z

Set of 5 wheels dia. 40x40x13mm 64A 60 H 8 V
Cutting speed 50m/s / 9840sfpm.

Note: No longer usable for new quotes,
was replaced by selling no 5583084

5583125-Z

Set of 5 wheels Ø 40x40x13mm 11C 60 H 15 VP
Cutting speed 50m/s / 9840sfpm

5583083-Z

Set of 5 wheels dia. 40x40x13mm 54A 80 H 8 V604W
Cutting speed 50m/s / 9840sfpm

5583084-Z

Set of 5 wheels dia. 40x40x13mm 93A 80 H 13 VP601
Cutting speed 50m/s / 9840sfpm

5583025-Z

Set of 5 wheels dia. 50x40x16mm 42A 60 H 8 V
Cutting speed 50m/s / 9840sfpm.

Note: No longer usable for new quotes,
was replaced by selling no 5583085

5583075-Z

Set of 5 wheels dia. 50x40x16mm 64A 60 H 8 V
Cutting speed 50m/s / 9840sfpm.

Note: No longer usable for new quotes,
was replaced by selling no 5583086

5583126-Z

Set of 5 wheels dia. 50x40x16mm 11C 60 H 15 VP
Cutting speed 50m/s / 9840sfpm

5583085-Z

Set of 5 wheels dia. 50x40x16mm 54A 80 H 8 V604W
Cutting speed 50m/s / 9840sfpm

5583086-Z

Set of 5 wheels dia. 50x40x16mm 93A 120 H 13
VP601
cutting speed 50m/s / 9840sfpm

Weels for chucks

5583601-Z

Set of 10 wheels SARUBIN 60M dia. 6mm/.24"

5583602-Z

Set of 10 wheels SARUBIN 60M dia. 8mm/.31"

5583603-Z

Set of 10 wheels SARUBIN 60M dia. 10mm/.39"

5583604-Z
Set of 10 wheels SARUBIN 60M dia. 12mm/.47"

Wheels for face grinding arbor

5584008-Z
Cup wheel 64A46 H9V dia. 80mm/3.15"

5584012-Z
Cup wheel 64A46 H9V dia. 100mm/3.94"

Accessories for workhead

2909768-Z
Cut-in ring sensor (transmitter ring) for mounting on the clamping device for live spindle grinding or its adaptors with correspondent interface for use on workheads with fitting taper MT4.

Note: Requires correspondent sensor receiver ring on the workhead

2909770-Z
Receiver ring of cut-in ring sensor for chuck workhead with fitting taper MT4.

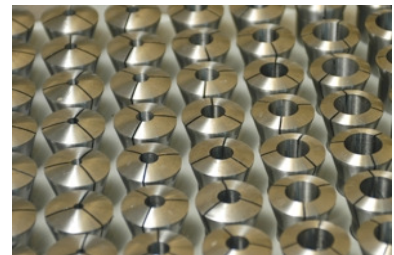
Note: With receiver ring mounted, it is only possible to use chucks which can be attached from the front side with screws. For the use of other chucks, centers and collets, the receiver ring has to be detached

Collets W20

1930704-Z
Adaptor for collets W20 for fitting taper MT4

Note: Requires draw-bar or lever operated rapid clamping for manual actuation or pneumatic clamping cylinder for controlled actuation

5558101-Z
Set of 37 collets W20 dia. 2-20mm, in steps of 0.5mm
Single collets orders possible



1930539-Z
Collet W20 dia. 0.5mm



1930540-Z
Collet W20 dia. 1mm

1930541-Z
Collet W20 dia. 1.5mm

1930400-Z
Collet W20 dia. 2mm

1930401-Z
Collet W20 dia. 2.5mm

1930402-Z
Collet W20 dia. 3mm

1930403-Z
Collet W20 dia. 3.5mm

1930404-Z
Collet W20 dia. 4mm

1930405-Z
Collet W20 dia. 4.5mm

1930406-Z
Collet W20 dia. 5mm

1930407-Z
Collet W20 dia. 5.5mm

1930408-Z
Collet W20 dia. 6mm

1930409-Z
Collet W20 dia. 6.5mm

1930410-Z
Collet W20 dia. 7mm

1930411-Z
Collet W20 dia. 7.5mm

1930412-Z
Collet W20 dia. 8mm

1930413-Z
Collet W20 dia. 8.5mm

1930414-Z
Collet W20 dia. 9mm

1930415-Z
Collet W20 dia. 9.5mm

1930416-Z
Collet W20 dia. 10mm

1930417-Z
Collet W20 dia. 10.5mm

1930418-Z
Collet W20 dia. 11mm

1930419-Z
Collet W20 dia. 11.5mm

1930420-Z
Collet W20 dia. 12mm

1930421-Z
Collet W20 dia. 12.5mm

1930422-Z
Collet W20 dia. 13mm

1930423-Z
Collet W20 dia. 13.5mm

1930424-Z
Collet W20 dia. 14mm

1930425-Z
Collet W20 dia. 14.5mm

1930426-Z
Collet W20 dia. 15mm

1930427-Z
Collet W20 dia. 15.5mm

1930428-Z
Collet W20 dia. 16mm

1930429-Z
Collet W20 dia. 16.5mm

1930430-Z
Collet W20 dia. 17mm

1930431-Z
Collet W20 dia. 17.5mm

1930432-Z
Collet W20 dia. 18mm

1930433-Z
Collet W20 dia. 18.5mm

1930434-Z
Collet W20 dia. 19mm

1930435-Z
Collet W20 dia. 19.5mm

1930436-Z
Collet W20 dia. 20mm

Adaptor for chucks

2909771-Z
Camlock head size 4, DIN 55029
for workhead MT4 and spindle nose dia. 70mm /
2.76" with interface for cut-in ring sensor.
Enables quick and simple change of clamping
devices for live spindle grinding.

Note: The standard assortment does not contain
camlock flanges and clamping devices with camlock
interfaces

Adaptor for chuck (blank)

2909772-Z

Flange blank dia. 148mm / 5.82"
for spindle nose dia. 70mm / 2.76" from workheads
with fitting taper MT4 (with interface for cut-in
ring sensor). Clamping device interface is unworked,
suitable for holding a chuck up to dia. 160mm / 6.3".

Note:

- Finishing must be carried out for each clamping
device through a design order
- Only chucks fastened from the front with screws
can be used as clamping devices

Three-jaw chuck (manually operated)

2909678-

Three jaw manual chuck dia. 100mm / 3.94"
for fitting taper MT4 (with torsion protection)
spiral chuck, radial precision centering.
Clamping range: outside dia. 3-93mm / .12-3.66",
inside dia. 25-87mm / .97-3.42". Repeating accuracy
approx. 0.02mm / .000,79".

Incl. hard jaws (1 set for outside and 1 set for
inside chucking), chuck key and adjusting key.
Laying of a coolant tube for internal grinding
process cooling is possible.

Note: Requires manual draw-bar for locking
clamping devices

2909679-

Three jaw manual chuck dia. 125mm / 4.92"
for fitting taper MT4, (with torsion protection),
spiral chuck, radial precision centering.
Clamping range: outside dia. 3-125mm / .12-4.92",
inside dia. 34-115mm / 1.34-4.53". Repeating accuracy
approx. 0.02mm / .000,79".

Incl. hard jaws (1 set for outside and 1 set for
inside chucking), chuck key and adjusting key. Laying
of a coolant tube for internal grinding process cooling
is possible.

Note: Requires hand chuck key for locking
clamping devices

2909654-Z

Three jaw manual chuck dia. 160mm / 6.3"
for fitting taper MT4, (with torsion protection),
spiral chuck, radial precision centering.
Clamping range: outside dia. 3-160mm / .12-6.3",
inside dia. 42-154mm / 1.65-6". Repeating accuracy
approx. 0.02mm / .000,79".
Incl. hard jaws (1 set for outside and 1 set for
inside chucking), chuck key and adjusting key.
Laying of a coolant tube for internal grinding
process cooling is possible.

Note: Requires hand chuck key for locking
clamping devices

Three-jaw chuck (manually operated) wedge type

2909783-Z

Three jaw manual chuck dia. 125mm / 4.92"
for spindle nose dia. 70mm / 2.76" from workheads
with fitting taper MT4, (with interface for a
cut-in ring sensor), wedge type.
Clamping range: Outside dia. 3-126mm / .12-4.96",
inside dia. 27-128mm / 1.06-5.04", jaw stroke 4.8mm
/ .19", repeating accuracy <0.02mm / .000,79".
Incl. 1 set of standard jaws and hard reversing jaws
for outside or inside chucking and chuck key for
chuck actuation. Laying of a coolant tube for internal
grinding process cooling is possible

2909264-Z

Soft top jaws for three jaw manual chuck dia. 125mm
/ 4.92" wedge type (L = 55mm / 2.17", W = 20mm /
.79",
H = 27.5mm / 1.08")

2439695-Z

Soft top jaws for three jaw manual chuck dia. 125mm
/ 4.92" wedge type (L = 54mm / 2.12", W = 20mm
/ 0.78", H = 27.5mm / 1.08")

2909784-Z

Three jaw manual chuck dia. 160mm / 6.3"
for spindle nose dia. 70mm / 2.76" from workheads
with fitting taper MT4 (with interface for cut-in
ring sensor), wedge type.
Clamping range: Outside dia. 5-162mm / .20-6.37",
inside dia. 65-179mm / 2.56-7.04", jaw stroke 6.3mm
/ .25", repeating accuracy <0.02mm / .000,79".
Incl. 1 set of standard jaws and hard reversing jaws
for outside or inside chucking and chuck key for chuck
actuation. Laying of a coolant tube for internal
grinding process cooling is possible

2909265-Z

Soft top jaws for three jaw manual chuck
dia. 160mm / 6.3" wedge type (L = 85mm /3.35",
W = 20mm / 0.79", H = 35.5mm / 1.39")

2439699-Z

Soft top jaws for three jaw manual chuck
dia. 160mm / 6.3" wedge type (L = 105mm / 4.13",
W = 20mm / 0.78", H = 35.5mm / 1.39")

Four-jaw manually operated chuck (spiral chuck)

2909680-Z

Four-jaw chuck dia. 125mm / 4.92"
for fitting taper MT4 (with torsion protection)
spiral chuck.
Clamping range: outside dia. 3-125mm / .12-4.92",
inside dia. 34-115mm / 1.34-4.53".
The jaws are individually adjustable.
Incl. hard jaws (1 set for outside and 1 set for
inside chucking), chuck key and adjusting key.
Laying of a coolant tube for internal grinding
process cooling is possible.
Note: Requires manual draw-bar for locking
clamping devices

2909661-Z

Four-jaw chuck dia. 160mm / 6.3"
for fitting taper MT4 (with torsion protection)
spiral chuck.

Clamping range: outside dia. 3-160mm / .12-6.3",
inside dia. 42-160mm / 1.65-6.3".

The jaws are individually adjustable.

Incl. hard jaws (1 set for outside and 1 set for
inside chucking), chuck key and adjusting key.

Laying of a coolant tube for internal grinding
process cooling is possible.

Note: Requires hand chuck key for locking
clamping devices

Face plate

2909681-Z

Face plate dia. 150mm / 5.9"
for fitting taper MT4 (with torsion protection).
With 4 grooves and 4 holes to fix workpieces or
clamping devices.

Note: Requires hand chuck key for locking
clamping devices

Magnetic chuck

2909682-Z

Magnetic chuck dia. 120mm / 4.72"
for fitting taper MT4 (with torsion protection),
permanent magnet.

Note: Requires manual draw-bar for locking
clamping devices

2909663-Z

Magnetic chuck dia. 165mm / 6.5"
for fitting taper MT4 (with torsion protection),
permanent magnet.

Note: Requires manual draw-bar for locking
clamping devices

Power chuck

2909633-Z

3 jaw power chuc dia. 110mm / 4.33"
for spindle nose dia. 70mm / 2.76" from workheads
with fitting taper MT4 (with interface for
installation of a cut-in ring sensor) and on
clamp actuating tube adaptor.

Clamping range: outside dia. 3-106mm / .12-4.17",
inside dia. 42-135mm / 1.65-5.31".

Jaw stroke: 3.2mm / .126", repeating accuracy
<0.02mm / .000,79".

Incl. 1 set of one-piece hard reversing jaws for outside
and inside chucking. Jaw holding fixture,
serrated 1/16"x90°. Laying of a coolant tube for internal
grinding process cooling is possible.

Notes:

- Conversion to other clamping devices is expensive.
- Requires pneumatic clamping cylinder

2909643-Z

Soft top jaws for power chuck dia. 110mm / 4.33"
(L=40 / 1.57", W=26.5 / 1.04", H=32mm / 1.18").

Note: For jaws with a prescribed diameter,
it is necessary to order a jaw machining per dia.
by a design order

2909719-Z

3 jaw precision power chuc dia. 110mm / 4.33"
for spindle nose dia. 70mm / 2.76" from workheads
with fitting taper MT4 (with interface for
installation of a cut-in ring sensor) and on
clamp actuating tube adaptor. Without jaws.

Jaw stroke: 1.25mm / .05", repeating accuracy
<0.002mm / .000,79". Jaw holding fixture with ball
positioning for jaw changing precision within 0.005mm
/ .000,2". Laying of a coolant tube for internal
grinding process cooling is possible.

Notes:

- Conversion to other clamping devices is expensive
- Requires pneumatic clamping cylinder
- Correspondent top jaws for each clamping
diameter required

2909721-Z

Soft top jaws for precision power chuck
dia. 110mm / 4.33" (L=49mm / 1.93", W=18mm /
.71",
H=28mm / 1.1").

Notes:

- 1 set per clamping diameter required
- For jaws with a prescribed diameter, it is necessary to order a jaw machining for each dia. by a design order indicating the desired diameter

2909723-Z

Chuck simulator for precision power chuck
dia. 110mm / 4.33" for precise pre-machining
of top jaws

2909725-Z

Pretension discs for outside chucking for precision
power chuck dia. 110mm / 4.33". For precise grinding
of the clamping diameter on the jaws. Pretension
disc can be removed without removal of the jaws.
Set consists of 8 discs, graduation 0.25mm / .010"

2909727-Z

Pretension ring for inside chucking for precision
power chuck dia. 110mm / 4.33". For precise grinding
of the clamping diameter on the jaws. The ring can
be clamped in 4 different positions with a pretension
diameter difference of 0.5mm / .02" for each. By means
of 3 cyl. pins dia. 5mm / .2" or 6mm / .24" it is
possible to cover the whole clamping range
(supplied without cyl. pins)

2909664-Z

3 jaw power chuck dia. 160mm / 6.3" for spindle
nose dia. 70mm / 2.76" from workheads with fitting
taper MT4 (with interface for installation of a
cut-in ring sensor) and on clamp actuating tube
adaptor.
Clamping range: outside dia. 6-165mm / .24-6.5",
inside dia. 36-181mm / 1.42-7.12". Jaw stroke: 3.6mm
/ .14", repeating accuracy <0.02mm / .000,79".
Incl. 1 set of one-piece hard reversing jaws
for outside and inside chucking. Jaw holding fixture,

serrated 1/16"x90°. Laying of a coolant tube for internal grinding process cooling is possible.

Notes:

- Conversion to other clamping devices is expensive
- Requires pneumatic clamping cylinder

2909676-Z

Soft top jaws for power chuck dia. 160mm / 6.3" (L=55 / 2.17", W=26.5 / 1.04", H=38mm / 1.5").

Note: For jaws with a prescribed diameter, it is necessary to order a jaw machining for each dia. by a design order indicating the desired diameter

2909718-Z

3 jaw precision power chuck dia. 160mm / 6.3" for spindle nose dia. 70mm / 2.76" from workheads with fitting taper MT4 (with interface for installation of a cut-in ring sensor) and on clamp actuating tube adaptor. Without jaws. Jaw stroke: 2.5mm / .10", repeating accuracy <0.002mm / .000,79". Jaw holding fixture with ball positioning for jaw changing precision within 0.005mm / .000,2". Laying of a coolant tube for internal grinding process cooling is possible.

Notes:

- Conversion to other clamping devices is expensive
- Requires pneumatic clamping cylinder
- Correspondent top jaws for each clamping diameter required

2909720-Z

Soft top jaws for precision power chuck dia. 160mm / 6.3" (L=72mm / 2.83", W=26mm / 1.02", H=36mm / 1.42").

Notes:

- 1 set per clamping diameter required
- For jaws with a prescribed diameter, it is necessary to order a jaw machining for each dia. by a design order indicating the desired diameter

2909722-Z

Chuck simulator for precision power chuck dia. 160mm / 6.3" for precise pre-machining of top jaws

2909724-Z

Pretension discs for outside chucking for precision power chuck dia. 160mm / 6.3". For precise grinding of the clamping diameter on the jaws. Pretension disc can be removed without removal of the jaws. Set consists of 17 discs, graduation 0.25mm / .010"

2909726-Z

Pretension ring for inside chucking for precision power chuck dia. 160mm / 6.3". For precise grinding of the clamping diameter on the jaws. The ring can be clamped in 4 different positions with a pretension diameter difference of 0.5mm / .02" for each. By means of 3 cyl. pins dia. 5mm / .20" or 6mm / .24" it is possible to cover the whole clamping range (supplied without cyl. pins)

2909656-ZK

Working of soft jaws for chuck, dia.: ...mm

Note: 1 x for diameter necessary

Dressing attachment (non controled)

2665610-Z

Dressing device for dressing position 1

Note: Requires dressing tool holder height adjustable

Dressing tool holder for dressing attachment

2915602-Z

Dressing tool holder vertically adjustable for dressing attachment. With 3 fitting tapers MT1 shortened for 2 dressing tools



M-sensor for dressing spindle

2665017-Z

M-sensor for dressing spindle dia. 72mm / 2.83" for cut-in detection on rotating dressing.

Incl. sensor holder for mounting on the spindle holder and plugable connection cable (length 4m)

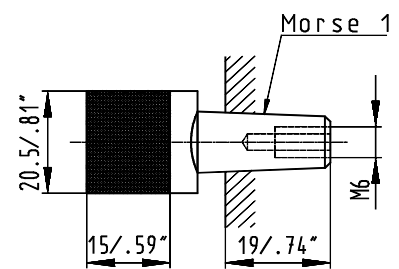
2665048-Z

M-sensor for belt-driven dressing spindle type A,
for contact detection on rotating dressing tool.
Incl. plugable connection cable (length = ...m)

Dressing tools with fitting taper MT1 shortened

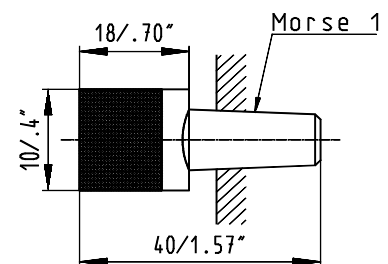
2813076-Z

Grain fliese diamond 1.15 mm/.045" with fitting
taper MT1 shortened



5560732-Z

Needle fliese type DV/10 NX, hight 10mm / .39",
length 18mm / .71" with fitting taper MT1 shortened



5560731-Z

Needle fliese type DV/20 NX, hight 20mm / .79",
length 20mm / .79" with fitting taper MT1 shortened

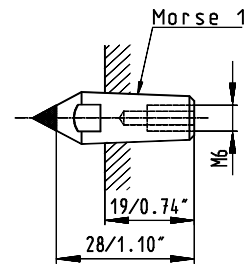
5560511-Z

Needle fliese type MKD-3-0640 DV/10, hight 10mm /
.39",
length 18mm / .71" with fitting taper MT1 shortened

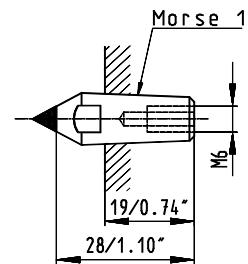
5560512-Z

Needle fliese type CVD-3-0640 DV/10, hight 10mm /
.39",
length 18mm / .71" with fitting taper MT1 shortened

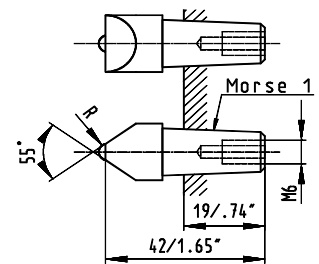
2813077-Z
 Single point diamond 0.1 carat,
 with fitting taper MT1 shortened



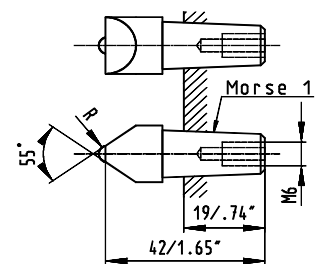
2813079-Z
 Single point diamond 1.5 carat,
 with fitting taper MT1 shortened



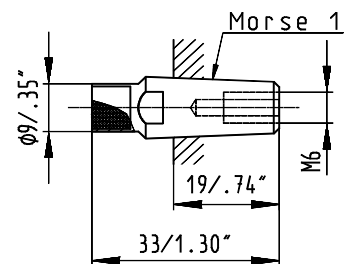
5560304-Z
 Single point diamond 0.45 carat 55 deg.
 R 0.25mm / .01" with fitting taper MT1 shortened



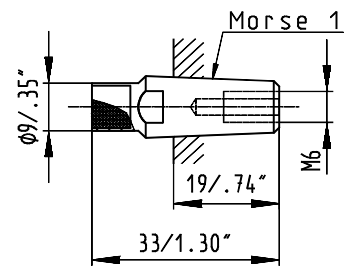
5560305-Z
 Single point diamond 0.45 carat 55 deg.
 R 0.5mm / .02" with fitting taper MT1 shortened



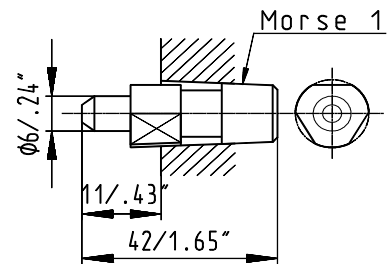
2813075-Z
 Impregnated diamond grit 25
 with fitting taper MT1 shortened



2813081-Z
 Impregnated diamond grit 100
 with fitting taper MT1 shortened

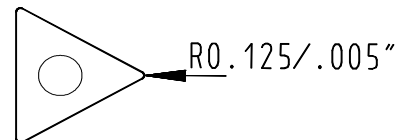


5560709-Z
 Impregnated diamond with fitting taper MT1 shortened

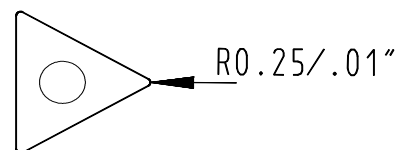


PCD-dressing plate with sep. fitting taper

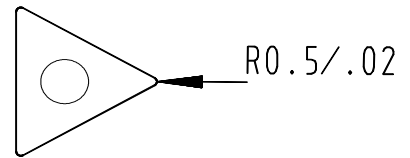
5560721-Z
 PCD-dressing plate R 0.125mm/.005"
 Note: Requires correspondent adaptor for
 PCD-dressing plates



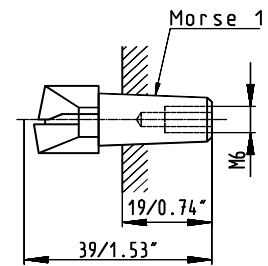
5560722-Z
 PCD-dressing plate R 0.25mm/.01"
 Note: Requires correspondent adaptor for
 PCD-dressing plates



5560723-Z
 PCD-dressing plate R 0.5mm/.02"
 Note: Requires correspondent adaptor for
 PCD-dressing plates

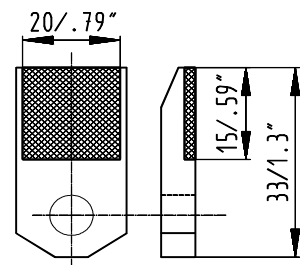


5560727-Z
 Adaptor for PCD-dressing plates (self-centering)

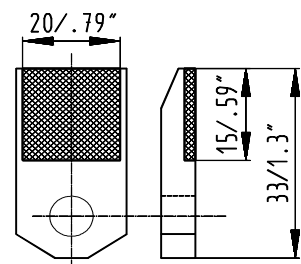


Grain fliese diamonds with sep. fitting taper

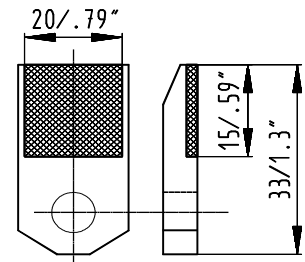
5560712-Z
 Grain fliese diamond 1.15mm/.045"
 Height 10mm / .39", length 15mm / .59"
 Note: Requires correspondent adaptor for
 Grain fliese diamond



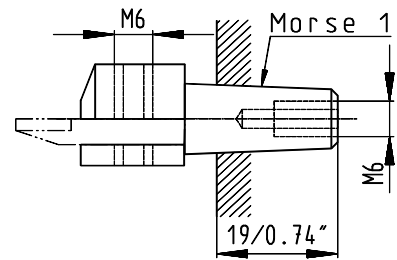
5560714-Z
 Grain fliese diamond 0.9mm/.035"
 Height 10mm / .39", length 15mm / .59"
 Note: Requires correspondent adaptor for
 Grain fliese diamond



5560719-Z
 Grain fliese diamond 0.75mm/.03"
 Height 10mm / .39", length 15mm / .59"
 Note: Requires correspondent adaptor for
 Grain fliese diamond

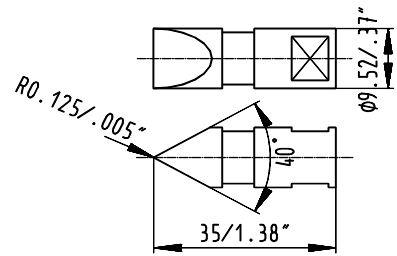


5560708-Z
 Adaptor MT1 shortened for grain fliese diamonds

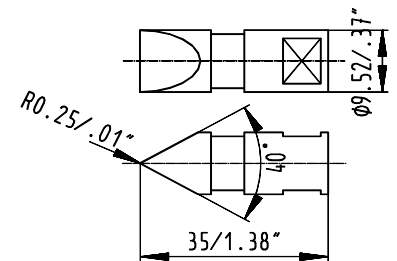


Dressing tools with cylindrical shaft dia 9.52x35mm

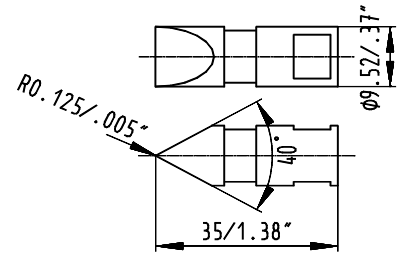
2415112-Z
 Single point diamond R 0.125, 40deg.
 (cylindrical shaft dia. 9.52x35mm / .37x1.38")



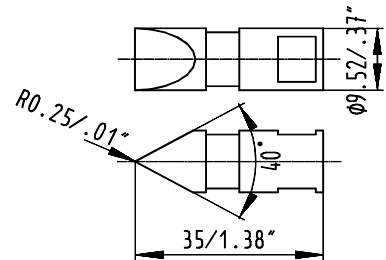
2415113-Z
 Single point diamond R 0.250, 40deg.
 (cylindrical shaft dia. 9.52x35mm / .37x1.38")



2415114-Z
 Profile diamond R 0.125, 40°, MKD
 (cylindrical shaft dia. 9.52x35mm / .37x1.38")



2415115-Z
 Profile diamond R 0.250, 40°, MKD (cylindrical
 shaft dia. 9.52x35mm/.37x1.38")



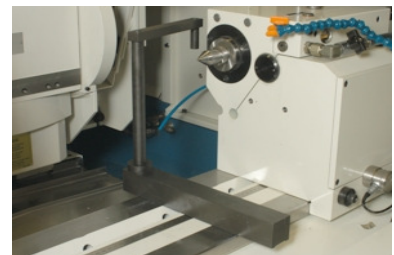
dressing motor spindle dia. 50mm / 1.97"

5560504-Z
 Diamond tipped cupwheel dia. 15x13mm / 0.59x0.51",
 shaft dia. 4mm / 0.16"

5560509-Z
 Diamond tipped cupwheel (10 deg. tapered)
 dia. 16x15mm / 0.63x0.59", shaft dia. 4mm / 0.16"

Auxiliary attachment for the adjustment of the dressing tool height

2621606-Z
 Auxiliary attachment to adjust stationary dressing tools to
 225mm/8.86" center height



Footpedal

2404753-Z

Approval pedal to carry out movements with open operating doors (with switch-off above the stroke). Facilitates workpiece alignment in the chucks. Connection cable length 3.5m

from series 16



2404754-Z

Footpedal for clamping devices for electrically controlled clamping devices (hydraulic tailstock retraction, chucks etc.) Double foot pedal (clamping/unclamping) with over-travel switch on the clamping pedal. Connection cable length 3.5m

from series 16

First cut recognition

1332636-Z

Sensitron pick-up with magnetic base incl. connection cable (length 3m).

Note: Not for use with Sensitron 2 until series 15



2404774-Z

First cut sensor with magnetic base and connection cable, length 4m

from series 16



Hydraulic and lubricating oil

For X-/Z-axes: Oil Shell Tonna S32
For high frequency motor spindles GMN: Oil Motorex Spindle Lube ISO VG 46
For high frequency motor spindles Fischer: Oil Motorex Spindle Lube ISO VG 68
Oil for lubrication in connection with pneumatic lifting: Mobil DTE 24
For hydraulic: Oil Shell Tonna S32

Oil Shell Tonna S32

5601806-Z
5 litre can oil Shell Tonna S32



5601807-Z
3 cans at 20 litres oil Shell Tonna S32



Grease Klüber Staburags NBU 8 EP

5601613-Z
1 kg grease KLÜBER Staburags NBU 8 EP

Oil Mobil DTE 24

5601829-Z
5 litre can oil MOBIL DTE 24



5601816-Z
2 cans of 10 litre oil MOBIL DTE 24



5601814-Z
50kg drum oil MOBIL DTE 24



Oil Motorex Spindle Lube ISO VG46

5601866-Z
Can of 4 liters oil Motorex Spindle Lube ISO VG46,
cleanliness class 13/10 according to ISO 4406

Oil Motorex Spindle Lube ISO VG 68

5601869-Z
4 litre can oil Motorex Spindle Lube ISO VG 68
cleanliness class 13/10 according ISO 4406



Filter paper

5490116-Z
Filter paper medium OL 40, roll of 200 , width 1000mm



5490115-Z

Filter fleece, fine OL 50, recommended for emulsion;
roll of 150m, width 1000mm

2918649-Z

Filter fleece "finest" 260/100, recommended
for finest filtering of emulsion.
Roll of 60m, width 1000mm/39.37"

Coolant

5601412-Z

5 litre can of coolant CASTROL Hysol R



5601420-Z

15 litres can of coolant CASTROL Hysol R



Corrosion protection agents

3118613-Z

Corrosion protection agents. 5 litres can Motorex Coolant
F for motor spindles internal cooling



2918032-Z

Can with 0.15 liter fungicide Motorex Antisept for the water cooling circuit of the motor spindles



2918695-Z

Can (1 l) of cleaner for the water coolant circuit of motor spindles, Motorex Swisscare SC



Filter mat for grinding mist extraction unit

2422667-Z

Spare filter mat (10 pces.) for grinding mist extraction unit for emulsion



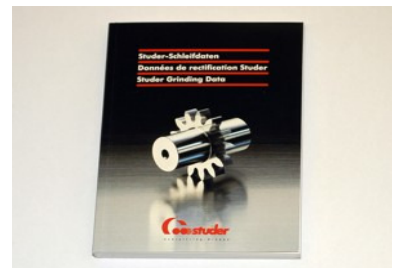
2422662-Z

Spare filter mat (10 pces.) for grinding mist extraction unit for oil

Machine documentation

9904256-Z

Booklet Studer Grinding Data (pocket file)



Auxiliary accessories

1848602-Z
Steel tool cabinet

