



NEW PRODUCT

KRONOS S 250

Precision for small workpieces

 **MIKROSA**
KÖRBER
SCHLEIFRING

centerless is more

KRONOS S 250

Precision for small workpieces



The centerless grinding machine KRONOS S 250 is designed for infeed and throughfeed grinding of workpieces in the diameter range of 1.5 to 35 mm and an infeed width of up to 245 mm.

The utilisation of high-performance grinding wheel spindles and maintenance-free hybrid roller bearings allows to use CBN grinding wheels with a peripheral speed up to 150 m/s. Offset of workpieces in the grinding gap and of grinding wheels as well as the slogan of multiple production are only some of the terms characterizing this concept. This machine also enables well-directed grinding of diameter and front face in only one operation by using a 6° angled spindle unit. Oscillating grinding with a distance of ± 50 mm is a further possibility for center-less machining of extremely hard materials.

Another highlight of this machine is the special dressing system for the grinding and regulating wheels by means of 4 CNC axes in the centre on the workpiece level. For the grinding wheel dressing, there are optionally stationary or rotating dressers available, which can quickly be changed.

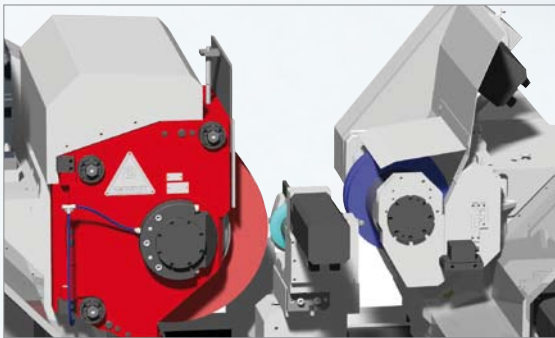
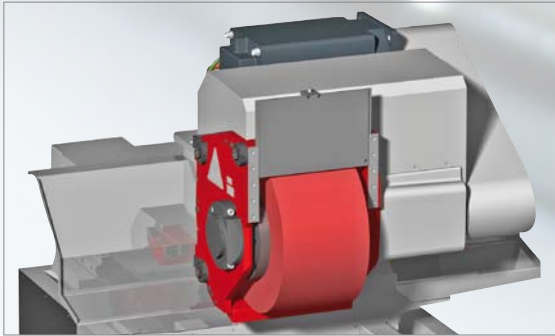
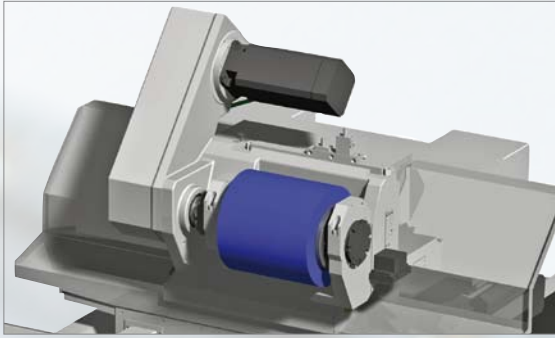
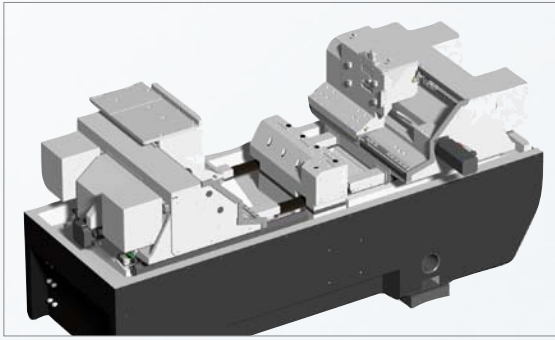
The stationary grinding gap allows to use low-cost automation equipment, which does not require any follow-up axis. An integrated handling system with an interface for external transport and palletizing devices can be offered as standard.

The full-size housing of the machine complies with the strictest environmental requirements, so that various coolant types, such as emulsions and grinding oil, can be used.

Multiple production

- > Huge productivity with highest precision
- > Example: 4 workpieces with 45 mm length at the same time





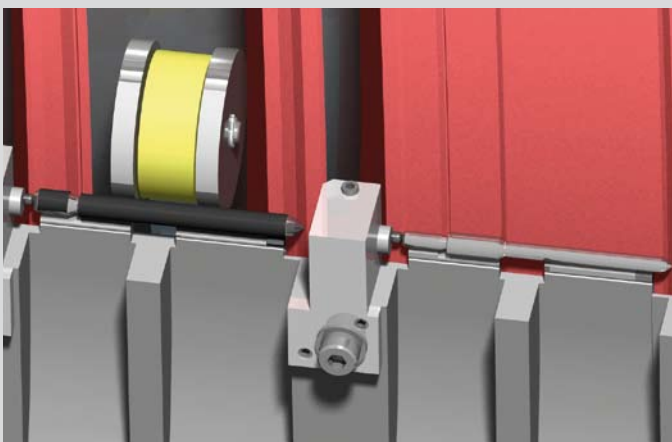
Design highlights

- > Thermally stable mineral casting machine bed with excellent vibration damping.
- > Cross slide systems with one X-axis and one Z-axis, X-axis feed increment 0.01 μm , glass scales as standard
- > Maintenance-free regulating spindle, both sides mounted on roller bearings, regulating wheel rise / fall +40 / -20 mm, swivel angle ± 5 degrees
- > Grinding spindle with maintenance-free hybrid roller bearings, circumferential speed of grinding wheel max. 150m/s (CBN), water-cooled drive motor 15 kW
- > Optional use of diamond dressing disc, diamond profile roll or fixed tool thanks to simple replacement of the dressing shaft (swiveling $+3^\circ/0^\circ/-3^\circ$)
- > Maximum profile accuracy through dressing in the center of the workpiece plane
- > Control panel swivels to the front and back
- > Highest safety standard provided by full enclosure
- > Service-friendly thanks to easy accessibility of all units
- > Simple operation with MIKROSA-specific software



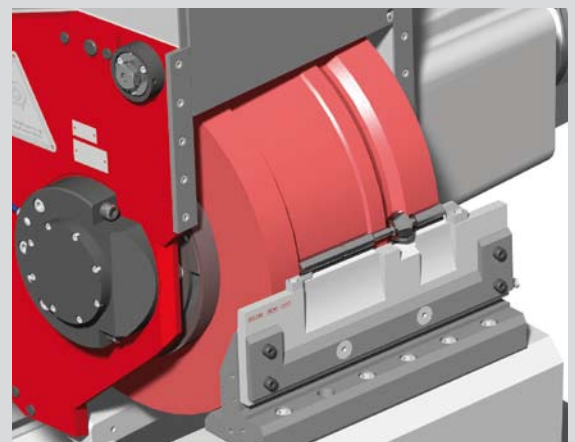
Synchronization

- > Processing of several work operations through synchronization of workpieces or offsetting of grinding wheels



Angular plunge-grinding

- > Quick conversion into a 6° angular plunge-grinding machine through simple replacement of the complete spindle unit



KRONOS S 250



KÖRBER
SCHLEIFRING

Schautd Mikrosa GmbH
Standort Leipzig
Saarländer Straße 25 · 04179 Leipzig
Tel +49 341 4971-0 · Fax +49 341 4971-500
sales@mikrosa.com · www.schautmikrosa.com

